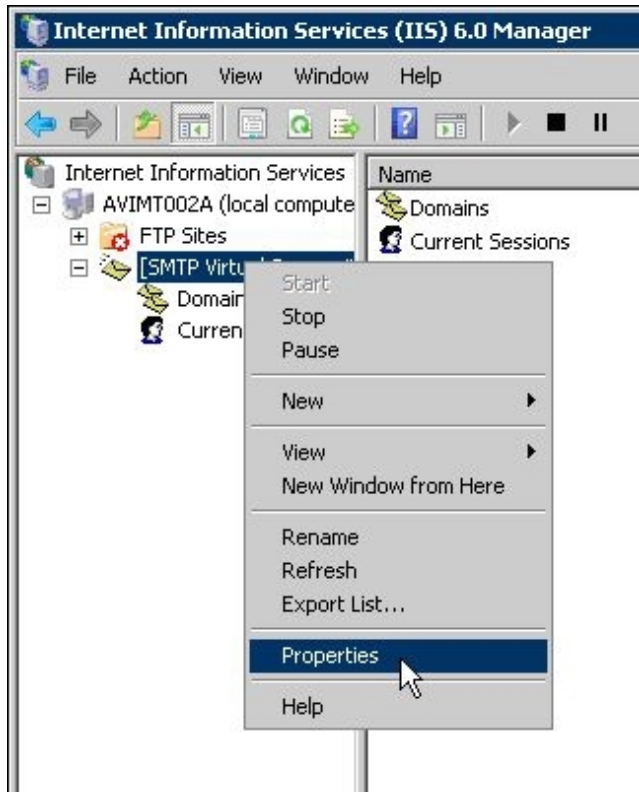


## Configure SMTP Server Service

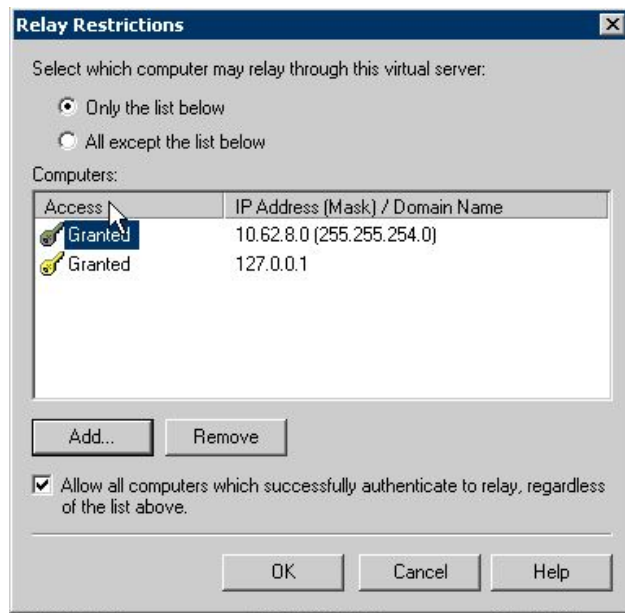
Configure the SMTP service with the IIS 6 manager:



Configure the *relay permissions*:



Grant storage network and the server itself relay access:



Configure the *smart host* (= the SMTP-server to which all messages should be send):



Advanced Delivery

Maximum hop count:  
15

Masquerade domain:  
[Empty text box]

Fully-qualified domain name:  
AVIMT002A [Check DNS]

Smart host:  
mail.dienst.vu.nl

Attempt direct delivery before sending to smart host

Perform reverse DNS lookup on incoming messages

[OK] [Cancel] [Help]

Please note that *AVIMT002A* is the name of the server (which has an interface in the storage LAN and in the management LAN). *mail.dienst.vu.nl* is the mail server.