

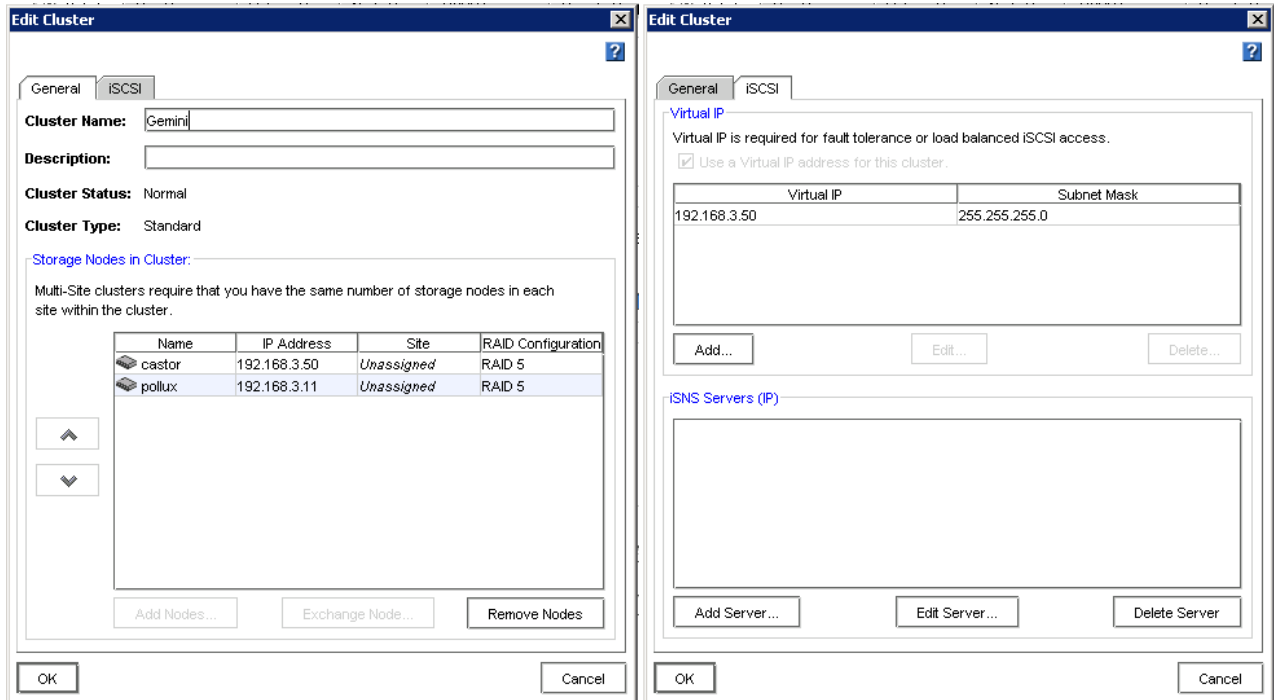
Our SAN cluster is named GEMINI. The two nodes are CASTOR and POLLUX. I believe that it was configured incorrectly.

Right now the configuration has the IPS of:

GEMINI 192.168.3.50
CASTOR 192.168.3.50
POLLUX 192.168.3.11

This can't be correct. I believe that the CASTOR node should be configured as 192.168.3.12 or something like it.

I need to know what the impact of changing this IP is and how best to go about doing it.



Thanks for your help.

--
Bill Darron
Director, Information Systems



Strategic Edge Communications
163 Madison Avenue • Suite 400 • Morristown, NJ 07960
973.525.1813 (p) • 973.525.1844 (f)
<http://www.strategicedge.com>