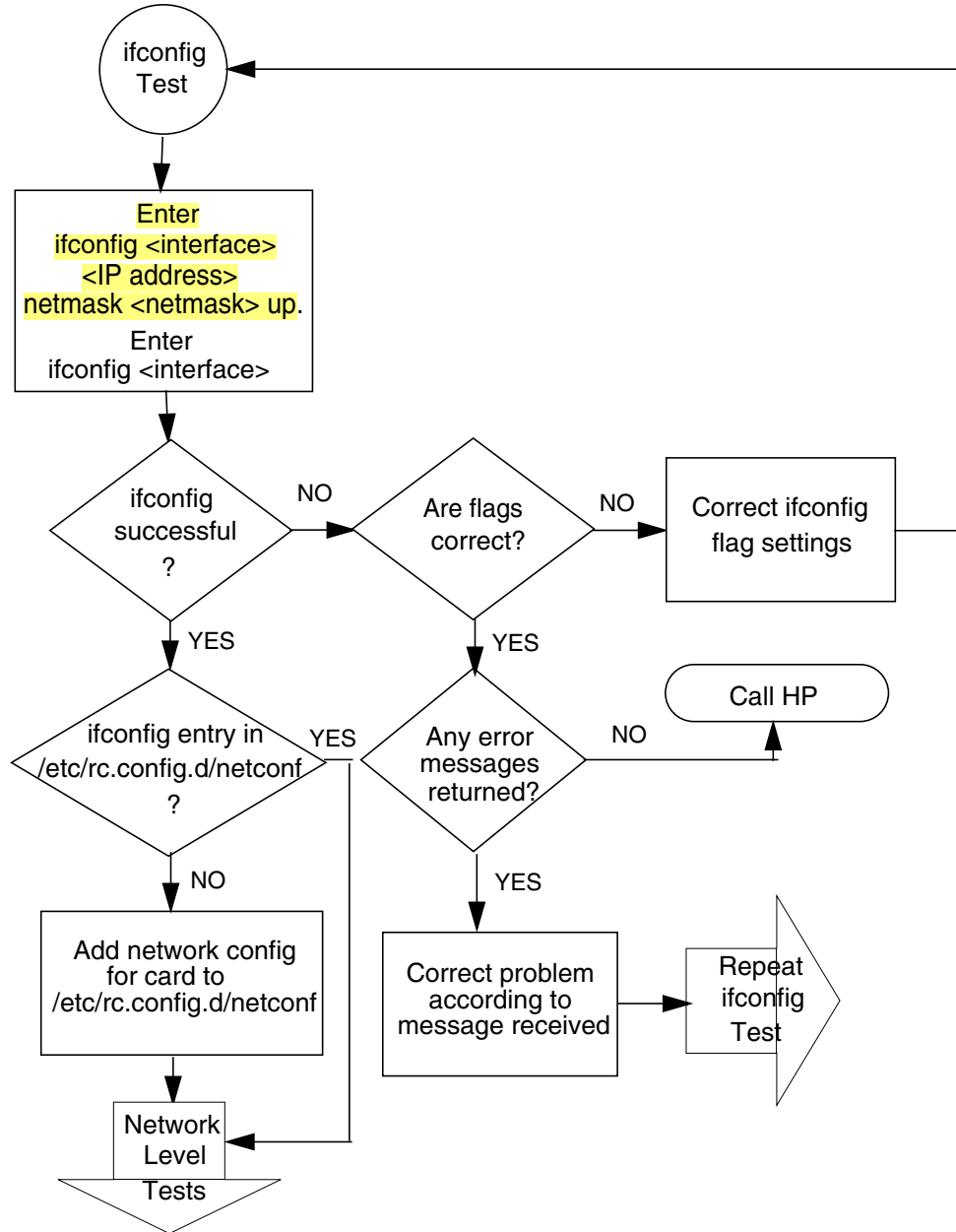


Flowchart 11: ifconfig Test

Use the process in Figure 4-12 (Flowchart 11) to verify configuration of the network interface on a host using `ifconfig(1M)`.

Figure 4-12 Flowchart 11: ifconfig Test



Flowchart 11 Procedures

The procedures in Flowchart 11 are:

- Enter `ifconfig(1M)` on the interface you want to configure to ensure that the interface is enabled. For example:

```
ifconfig lan1 192.6.1.17 netmask 255.255.255.0 up
```

Next, enter `ifconfig interface` to test and verify flag setting is UP and correct IP address is displayed. For example:

```
ifconfig lan1
```

```
<UP, BROADCAST, RUNNING, MULTICAST, CKO>
```

- If the IP and flags are correct, verify there is an entry for the card interface in `/etc/rc.config.d/netconf`. If so, go to Network Level Tests (Flowchart 3). Otherwise, add the correct interface parameters to `/etc/rc.config.d/netconf` file and reboot. If the flags are incorrect, correct them with `ifconfig` and repeat this test. Otherwise, if `ifconfig` is not successful and error messages appear, correct them accordingly and repeat this test.
- If you cannot correct the errors, call your HP representative.

Network Level Test for Jumbo Frames (Gigabit Ethernet only)

If you are using any of the Fast Ethernet cards, you may ignore this section. *Jumbo Frames only apply to Gigabit Ethernet.*

Test Procedure

Within a LAN (that is, not across a router or layer 3), MTUs of all the end stations must be set equal to each other, and greater than or equal to 1500. You can verify this using the `lanadmin -m administrative` command (on HP-UX systems). The MTU for bridges and layer 2 switches in the LAN must be set to the MTU value of the end stations, or more. To test for Jumbo Frames, follow these steps:

1. Ensure that the MTU of all end stations is greater than, or equal to, 1500.
2. Check the IP level connectivity by using the `ping(1M)` command with a message size greater than 1480. For example:

```
ping 192.6.20.2 2000
```

3. If there is a response to the `ping` command, Jumbo Frames is configured correctly.