
6 Licenses

Use the License Key Management pane to view, install, and uninstall license keys. Following are the tasks you can complete using this feature:

- ["Managing license keys"](#) on page 49
- ["Accessing License Key Management"](#) on page 50
- ["Installing a license key"](#) on page 51
- ["Uninstalling a license key"](#) on page 53

Managing license keys

Use the License Key Management pane to install license keys that enable disk array product features such as Business Copy and Continuous Access. License keys are e-mailed to you by the HP license server.

The License Key Management pane:

- Displays a list of software, showing which options do or do not have license keys installed
- Installs licenses
- Uninstalls licenses

Types of license keys

Three types of license keys are available:

- A temporary key is a 120-day trial key. When this key expires, it cannot be re-installed for 180 days.
- An emergency key is a 30-day key, used to continue operating a function until you obtain a permanent key, or to release a changed configuration after a temporary key expires. This key can be reinstalled.
- A permanent key does not expire. Permanent keys are purchased based on the capacity of your disk array.

Your HP account support representative can help determine which keys you need to purchase.

Accessing License Key Management

1. Click Licenses in the main window.

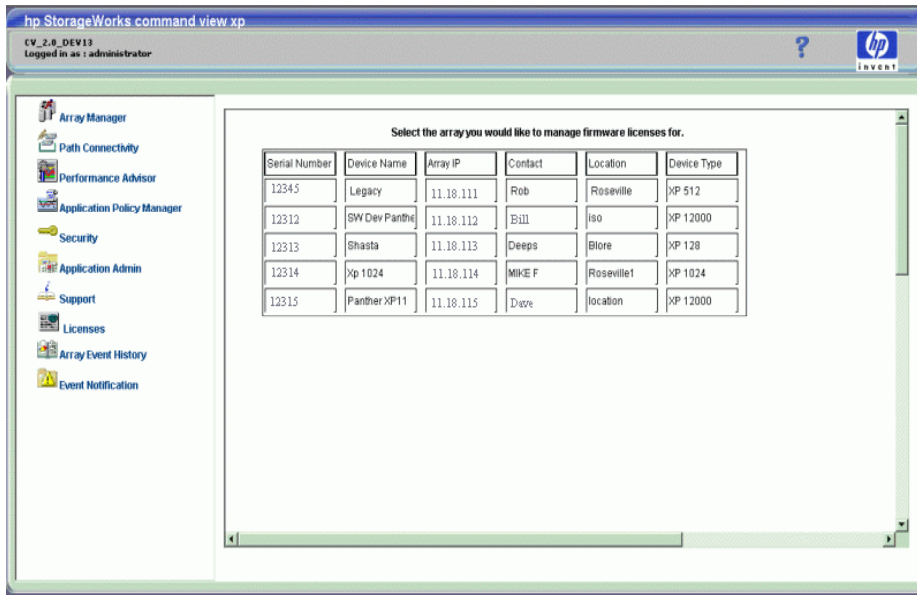


Figure 21 Accessing licenses



NOTE: This pane displays only those arrays for which the currently logged-in user has full array access permissions.

2. In the Serial Number column, click the disk array you want to access. The License Key Management pane appears.

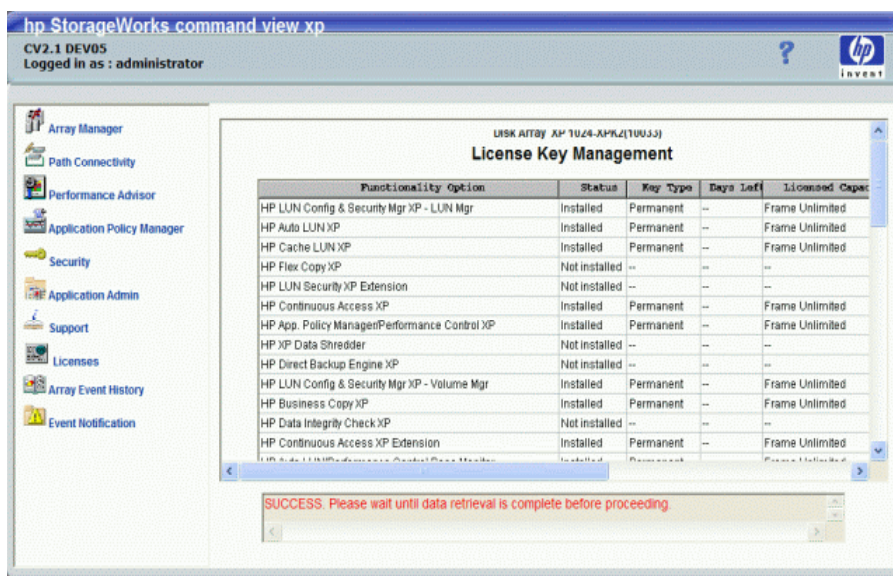


Figure 22 License Key Management pane

This pane lists the following items:

- **Functionality Option:** List of software options. Note that not all options are supported.
- **Status:** Installation status of the option (x²-~¿´»¼ or 0±~ x²-~¿´»¼).
- **Key Type:** Type of key installed (l »³°±@;@§ð Û³»[®]1»²½§ or Ð»[®]3¿²»²-). If no key is installed, the column displays óó.
- **Days Left:** Number of days before the key expires (Temporary and Emergency keys only).
- **Licensed Capacity:** Capacity of the license (for Permanent keys) in terabytes (TB).
- **Used Capacity:** Used Capacity (TB) is valid for applications like Continuous Access (CA), Business Copy (BC), Continuous Access XP - Journal, and Open LDEV Guard. When the license key for CA, BC, Continuous Access XP - Journal, or Open LDEV Guard is installed, the Used Capacity column shows actual used capacity.



NOTE: With some features, this will display as 0. For XP48 and XP512 arrays, used capacity information is not available and Used Capacity (TB) is displayed as ð.

- **Buttons:**
 - **Install:** Displays the License Key Management (Install) pane
 - **Uninstall:** Displays the License Key Management (Uninstall) pane
 - **Cancel:** Returns to the previous pane

Installing a license key

Use the License Key Management pane to install license keys. If an application is licensed with full capacity, its check box is disabled. Also, if “frame unlimited” appears for a feature in the “Licensed Capacity” column, the check box will be disabled in the License Key Management (Install) pane for that feature. If a feature is capacity-based and the permanent key installed is not frame unlimited, then the check box in the install screen will be enabled for that feature, allowing you to increment the licensed capacity further.