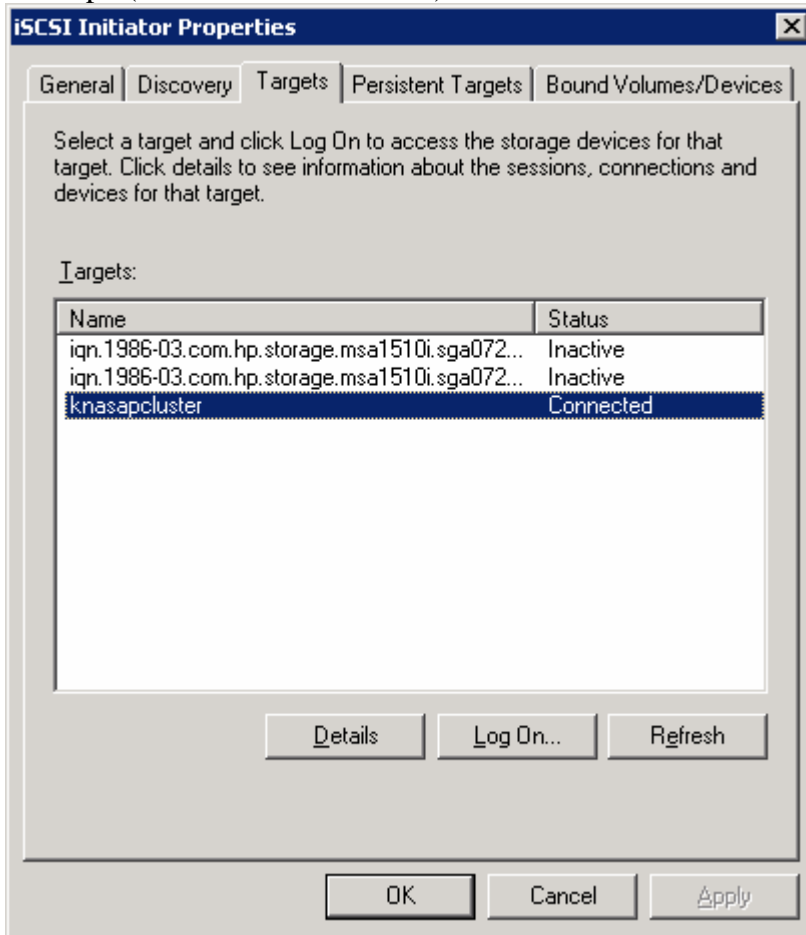
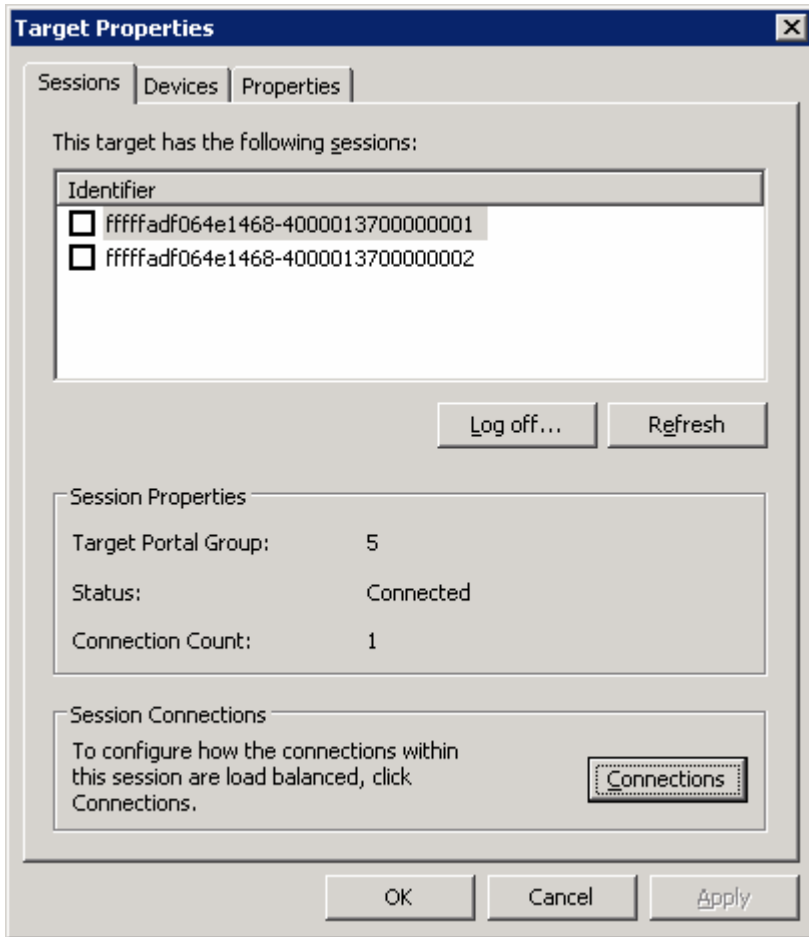


2 nodes in cluster, W2K3 R2 SP2 64-bit

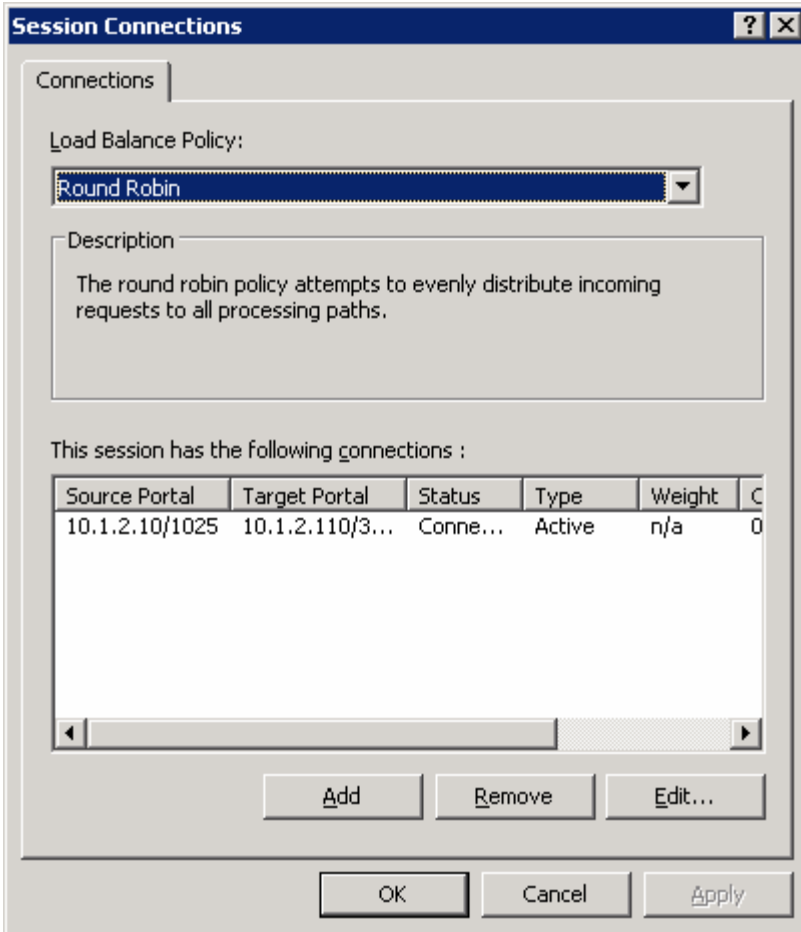
Knasap1 (node1 in MSCS cluster)



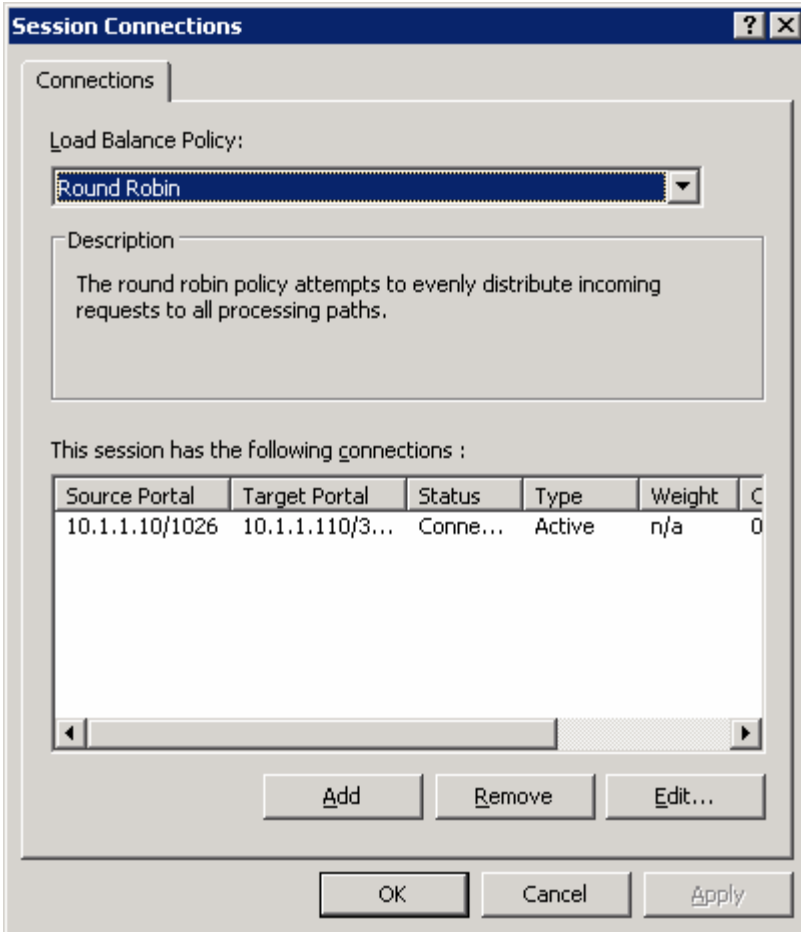
Cluster target from knasap1 (node 1 perspective)



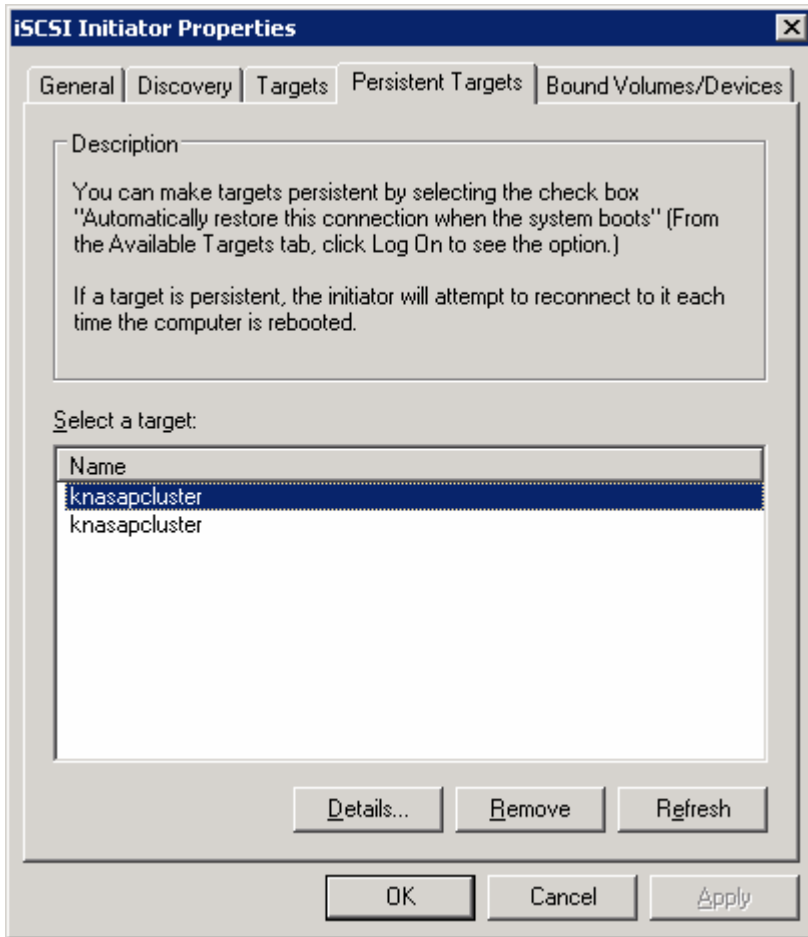
Knasap1 (top) connection portal group 5



Knasap1 (top) connection portal group 5

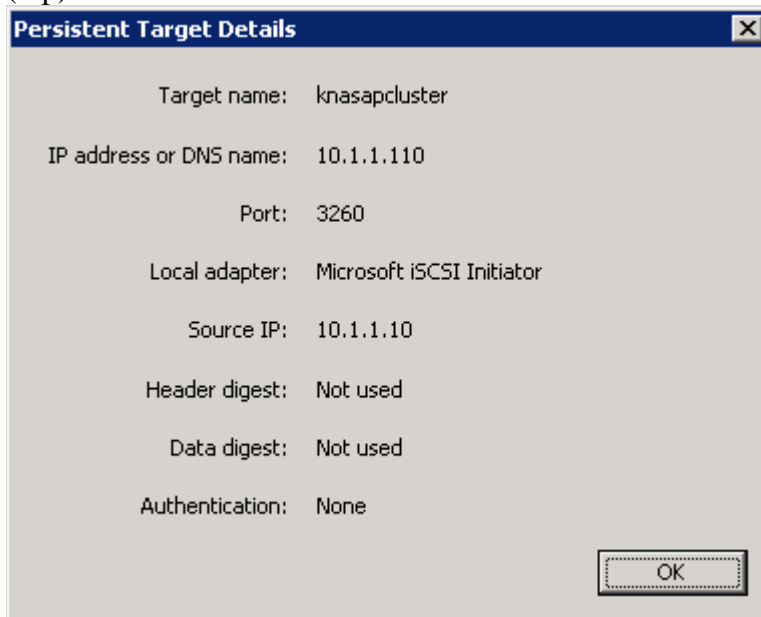


Knasap1 (bottom) Portal group 4

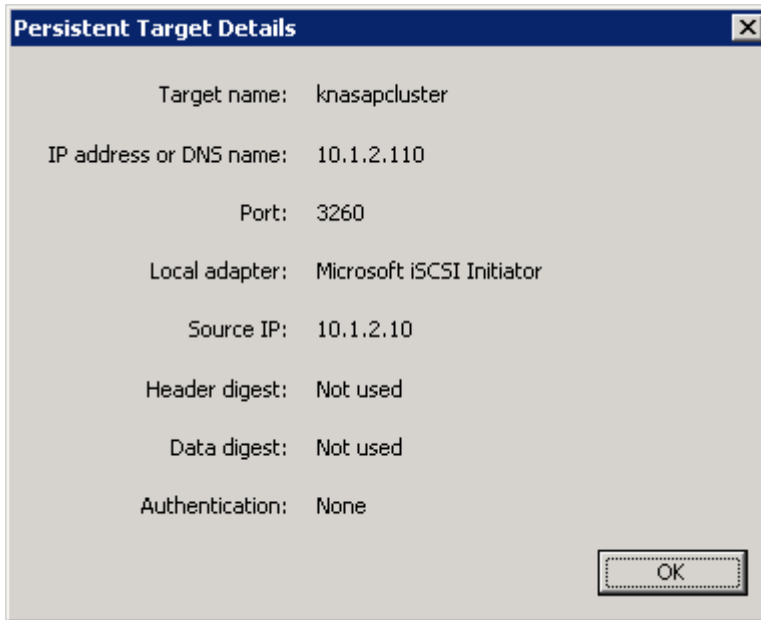


Knasap1 node1 persistent targets (automatically detected, one per path)

(top)



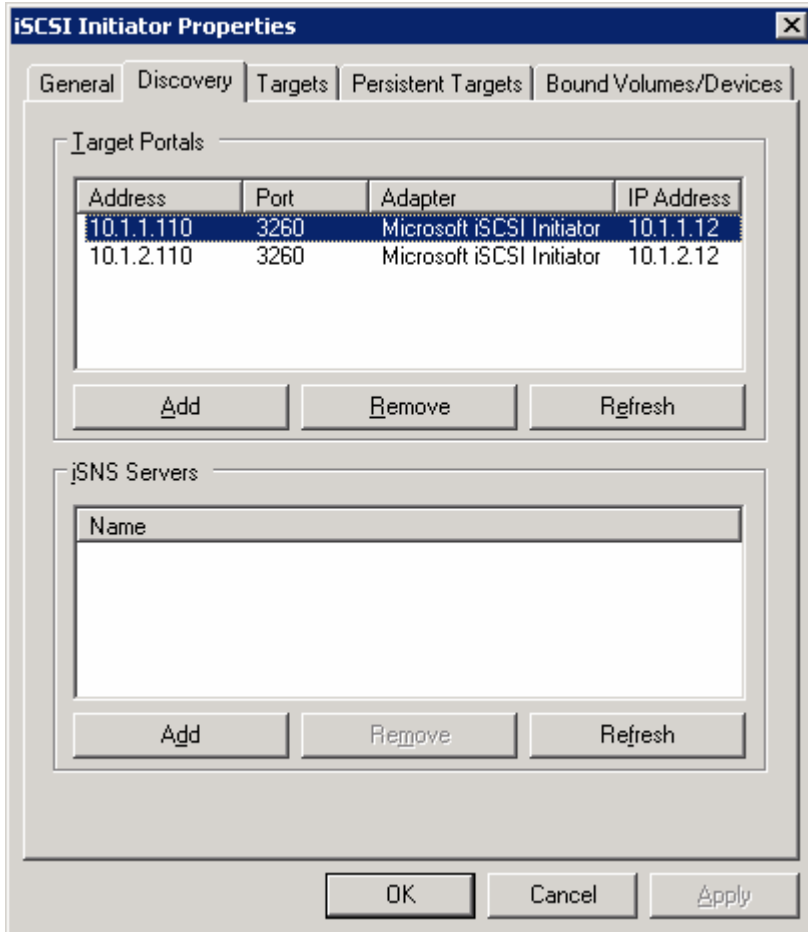
(top) binding details



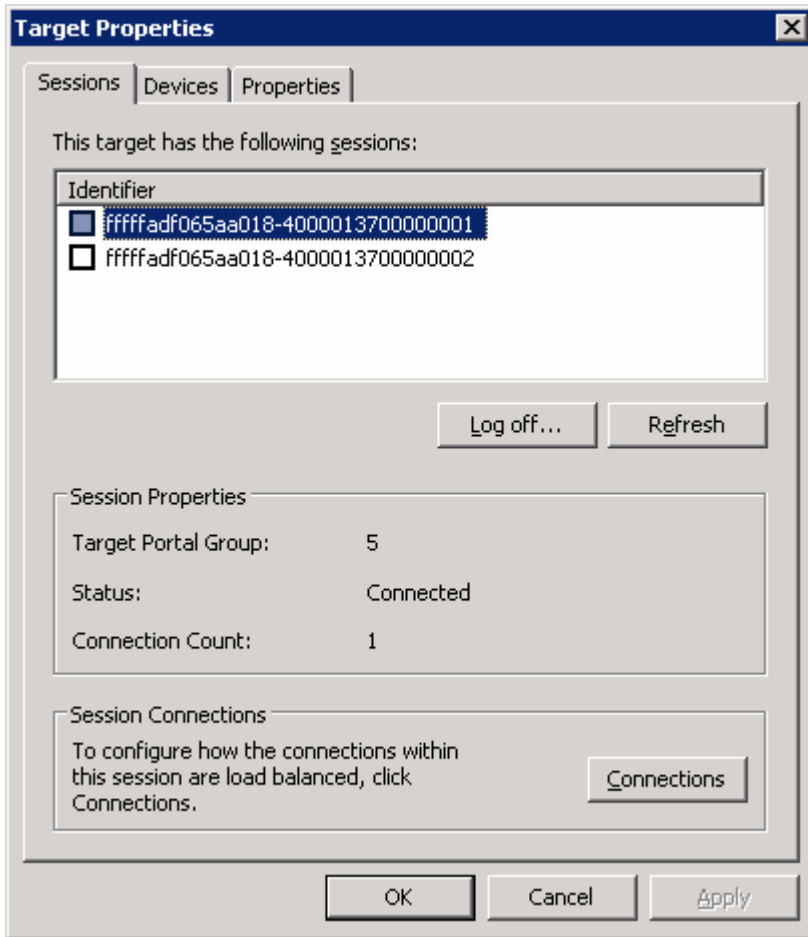
Knasap1 (bottom) persistent binding details

---

Knasap2 section – Node 2

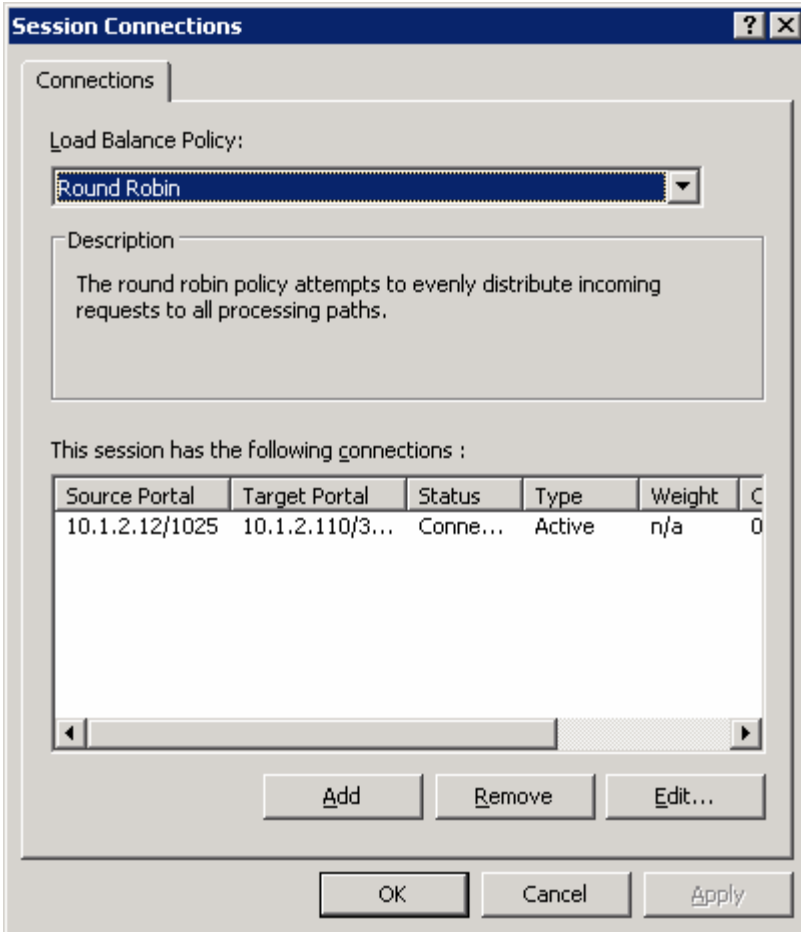


Knasap2 discovery node2

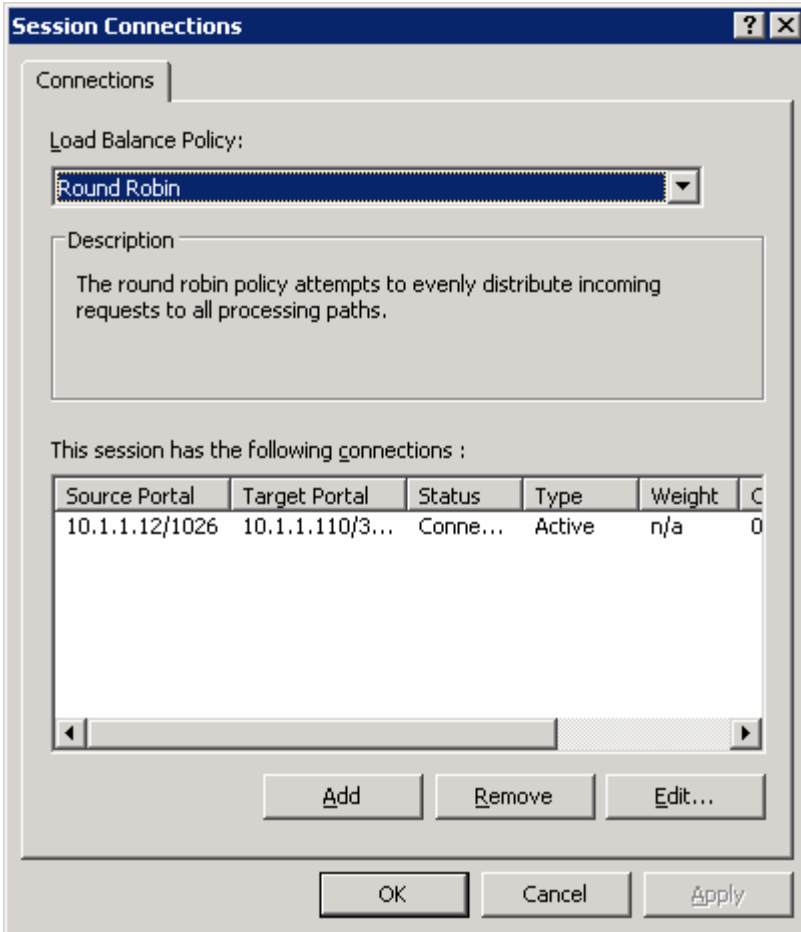


Knasap2 target (top)

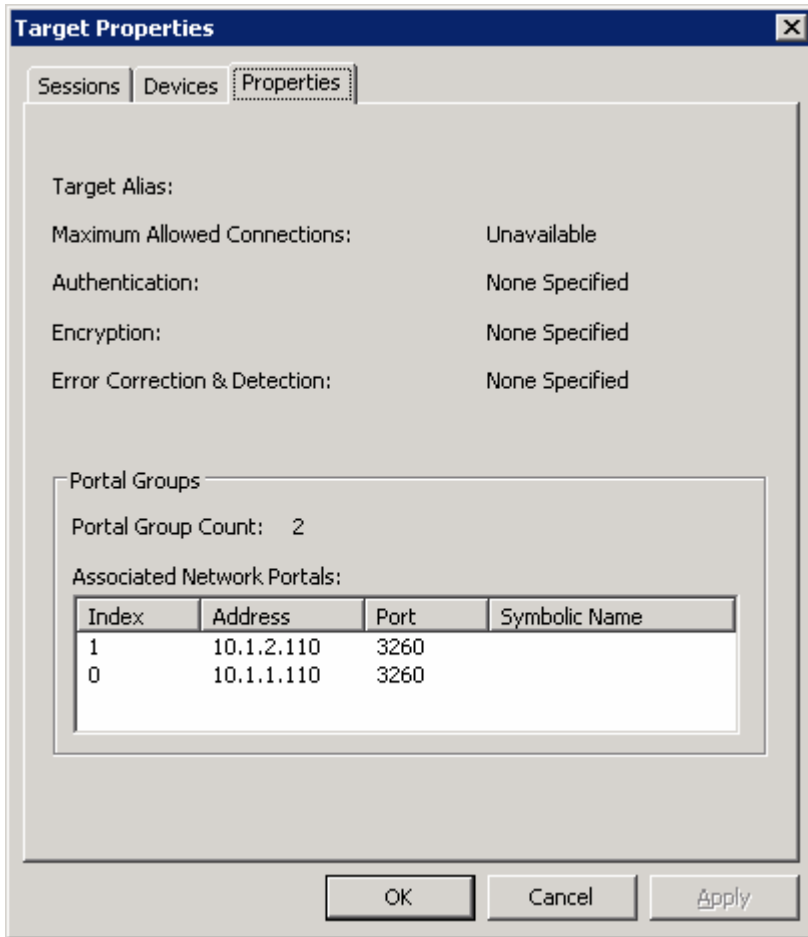




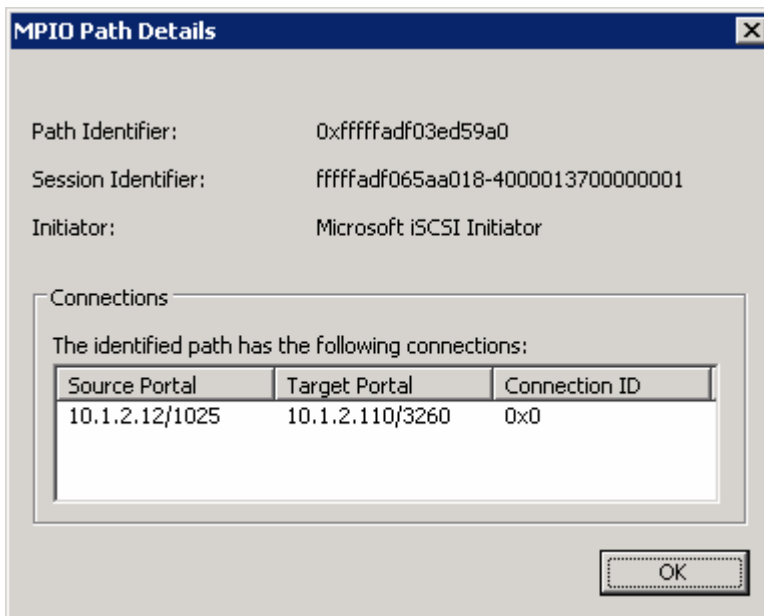
Knasap2 (top) connection details



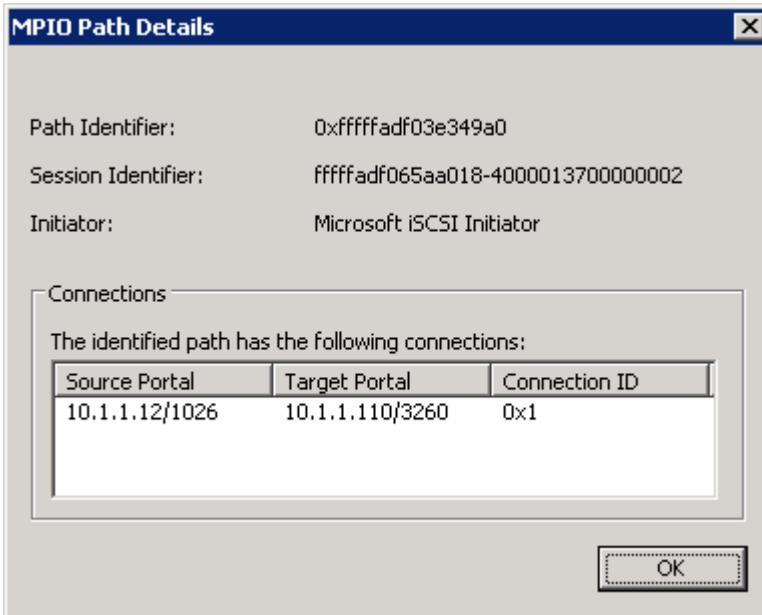
Knasap2 (bottom) connection



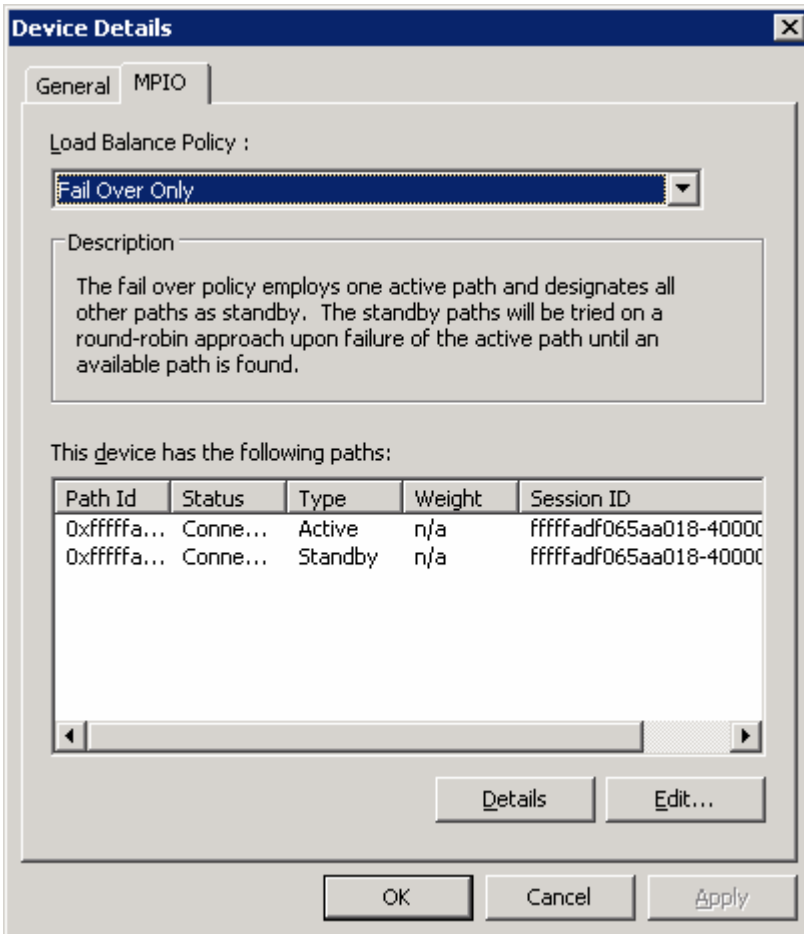
Knasap2 target properties



Mpio path details active (one sample drive F) from one path



Mpio standby path selected for details



Default load balance policy - Mpio paths (top), drive F:

