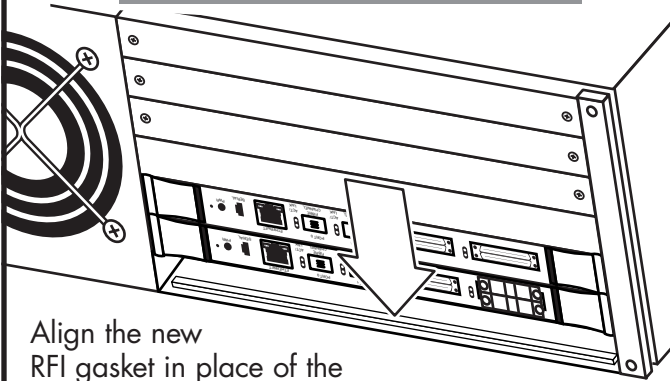
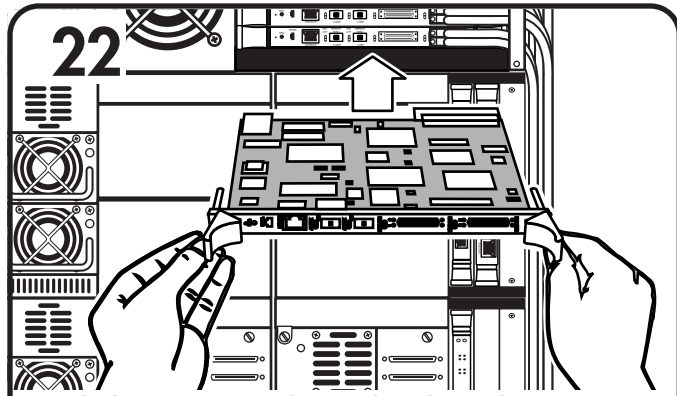
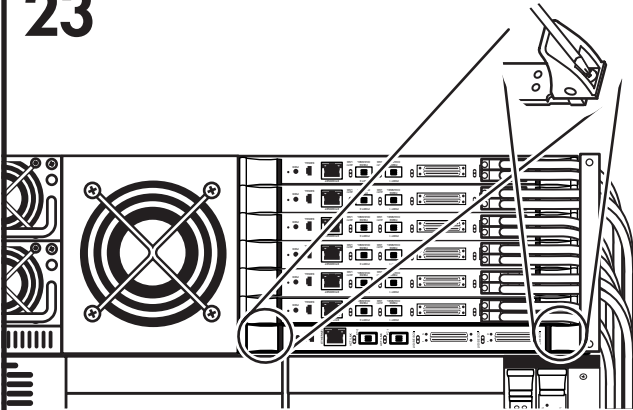


**21****Install the e2400-160 robotics controller card**

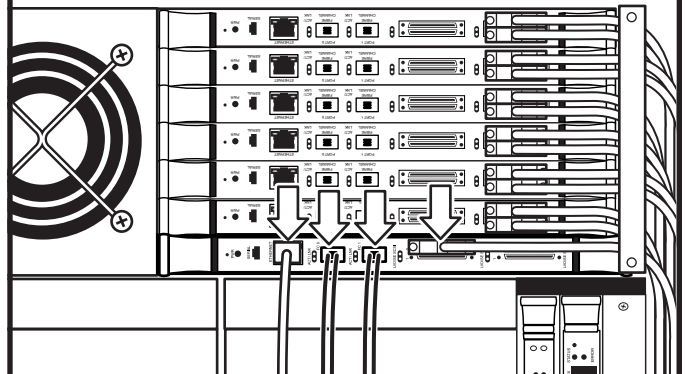
Align the new RFI gasket in place of the removed gasket and use the self-adhesive to attach the gasket to the bottom of the card cage.

**22**

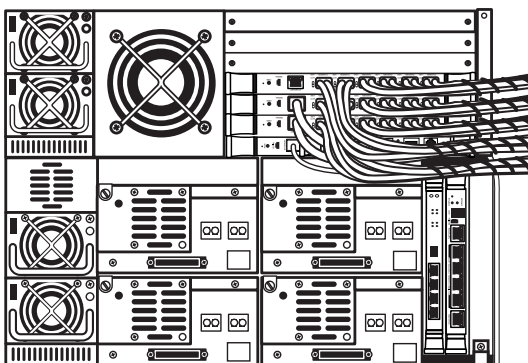
With the SCSI ports located to the right as you face the back of the library, slide the e2400-160 robotics controller card into the now open slot in the card cage. Ensure that the gasket touches the front, bottom edge of the card.

**23**

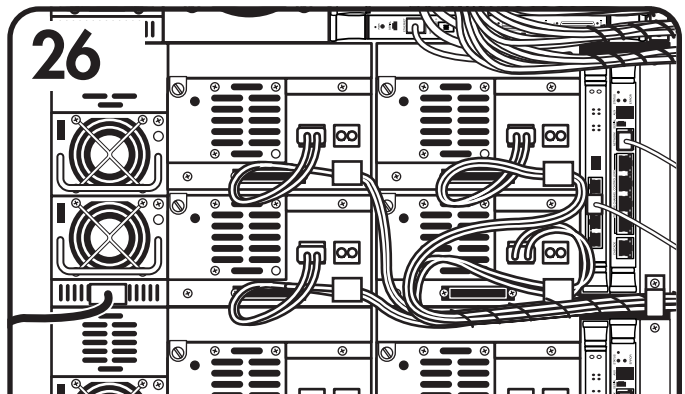
Use a #2 Phillips screwdriver to tighten the captive screws on the e2400-160 to secure it to the library.

**24**

Connect the cables to the new robotics controller. Use the 2 FC ports to connect the library to the two SANs you are using.

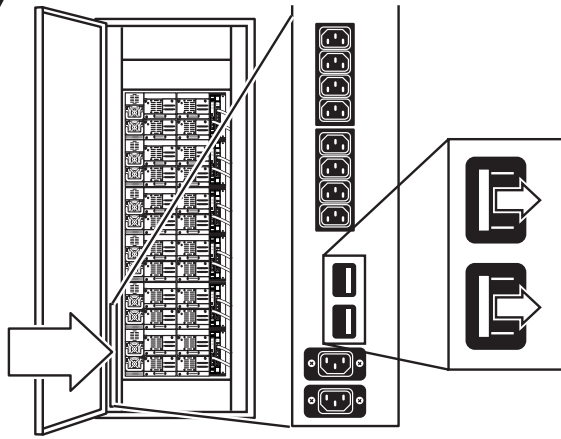
**25****Restore the library to operation**

Re-install the drive cluster and all of the drives that you removed in steps 7 through 13, above.

**26**

Re-attach cables to the cluster controller card, the Interface Manager card, the new robotics controller card, and the drives; then secure the FC cables as they were before you began this procedure. Re-attach the power cord that supplies power to the cluster.

# 27



Flip the two breaker switches on (to the right) at the power distribution unit.

# 28

Power on the library:

- Verify that power cables are firmly in place.
- Press the power button located behind the laptop tray.
- After several seconds, verify that the current state of the library appears in the System State display on the front panel ("On-line" or "Off-line").



**Note:** To change the state from off-line to on-line, press the **Ops** button on the front panel. Select **Cabinet**, then select **On-line**. Press **Yes**, then **OK**.

# 29

When the library has finished powering on, use Command View ESL to check the status and to verify that the library recognizes the new robotics controller card.

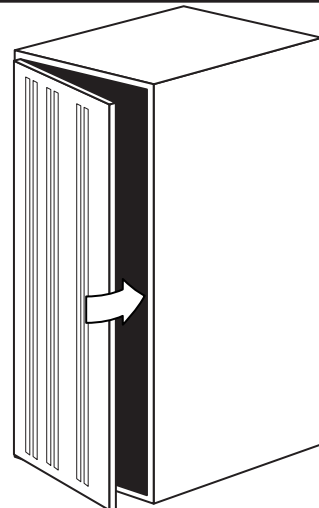
# 30

Download and install the firmware to support the e2400-160. Ensure that you have the latest Interface Manager firmware and Command View ESL software. Refer to the *HP StorageWorks Command View Users Guide* for detailed procedures on checking firmware revisions and making updates.

# 31

Use the software for the SANs to configure each SAN to recognize the library robotics.

# 32



Close the back door of the library.

## Getting help

- HP product information:  
<http://www.hp.com/support/else>
- HP technical support and phone numbers:  
<http://www.hp.com/support>
- HP StorageWorks Library and Tape Tools (L&TT) diagnostic software:  
<http://www.hp.com/support/tapetools>
- Interface Manager and HP StorageWorks Command View ESL:  
<http://www.hp.com/support/cvesl>

© Copyright 2004 Hewlett-Packard Development Company, L.P.

First Edition (November 2004)  
Part Number: 379574-001



379574-001