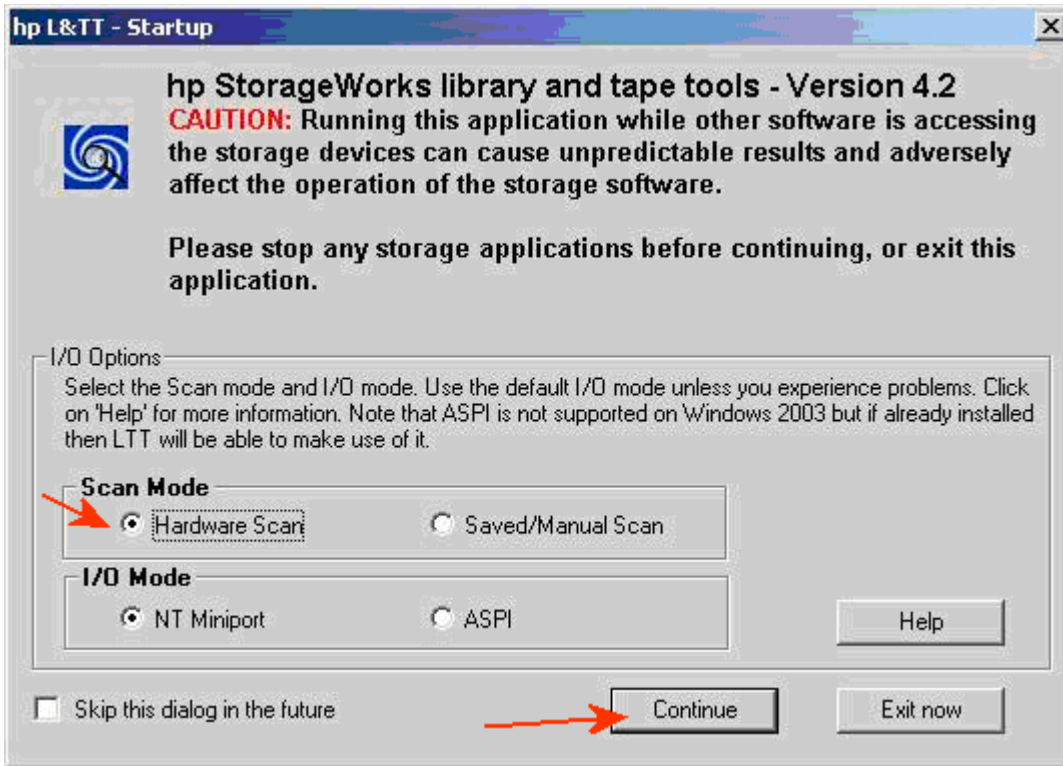
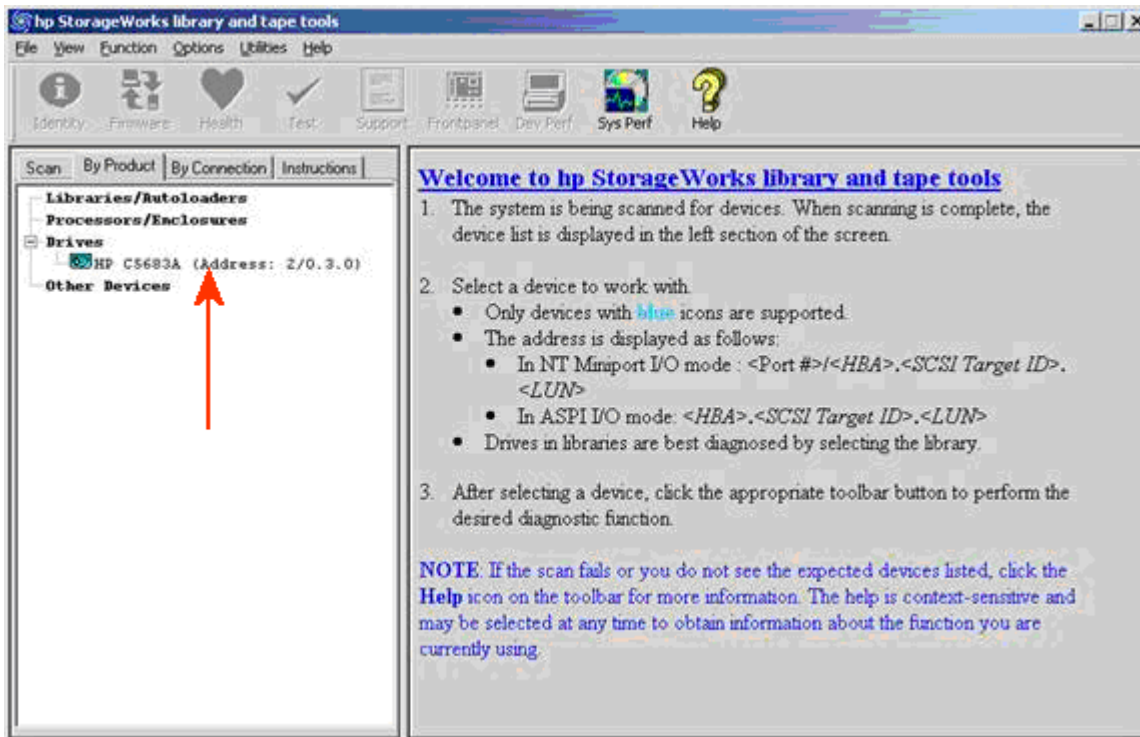


- Open Library and Tape Tools and perform a scan to find your tape drive...

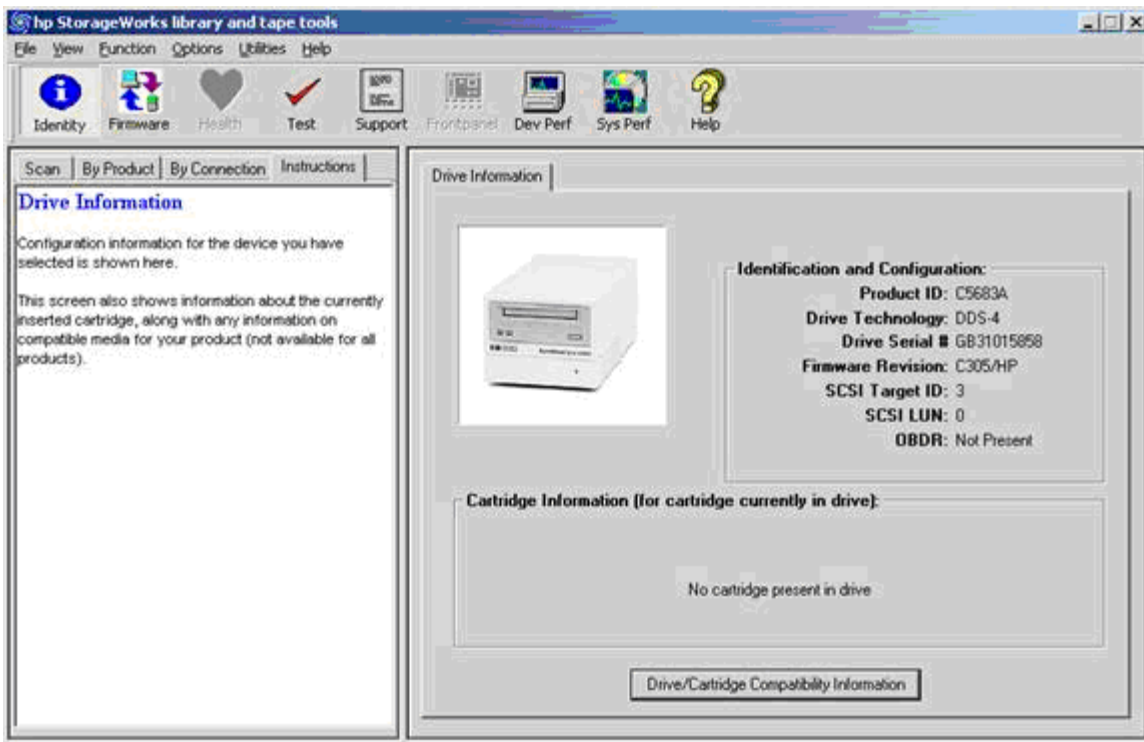


..... Click 'Continue' when ready

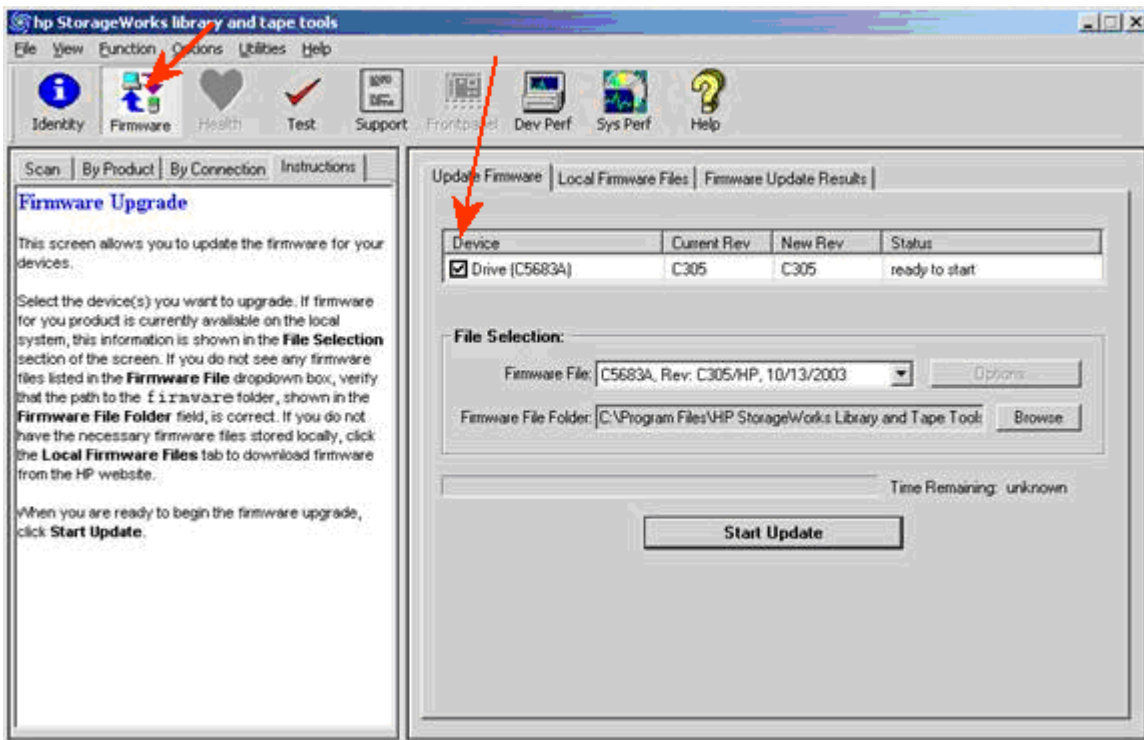
- You will see a screen similar to the one below once the scan is complete



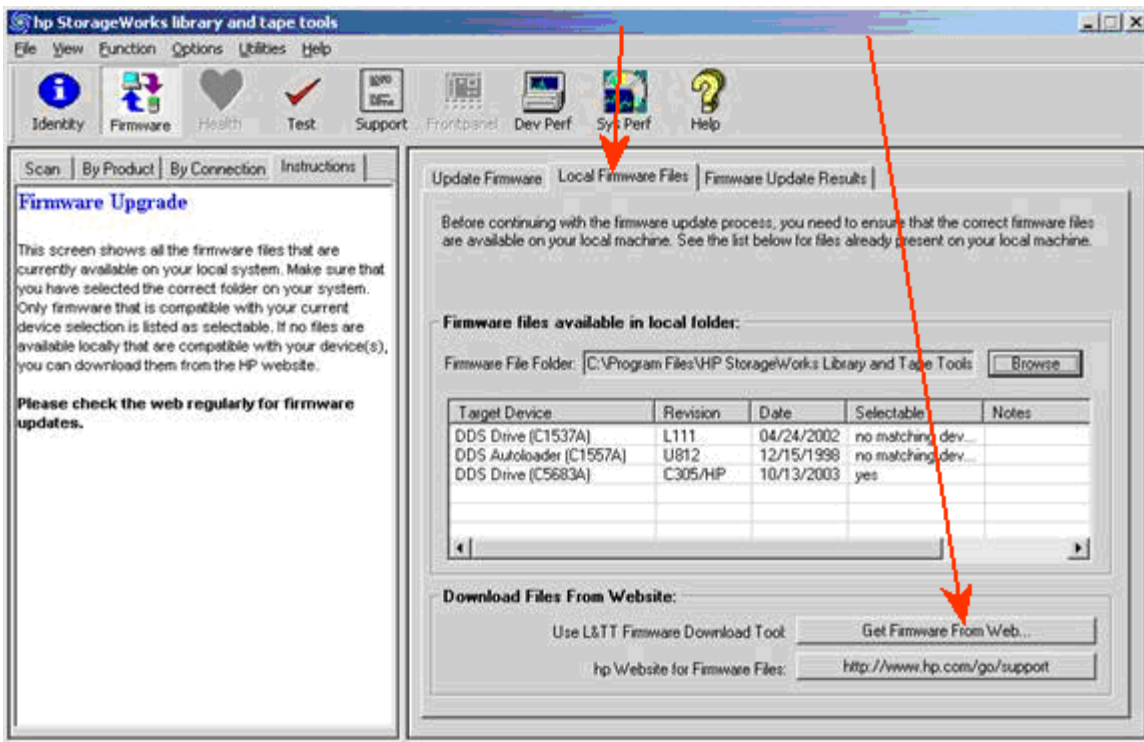
- One drive has been found (in this case a HP C5683A). Click on the drive to highlight and select it
- Information on the drive will be shown, you will also see that the menu icons are no longer 'greyed-out'



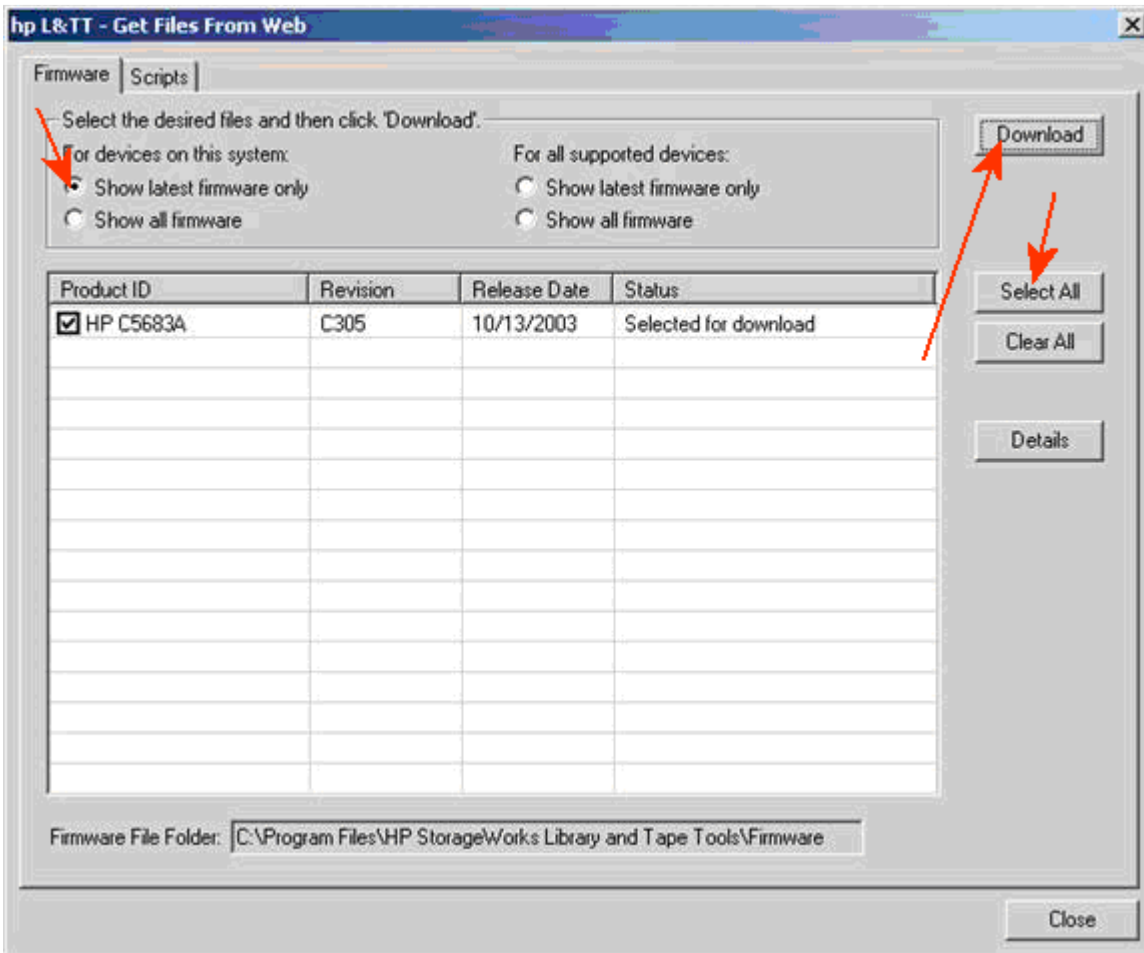
- Click on the 'Firmware' icon and tick the 'Device' box for the drive



- To check whether there have been any later updates than those already present on the local machine, select the 'Local Firmware Files' tab and click on the 'Get Firmware from Web' button

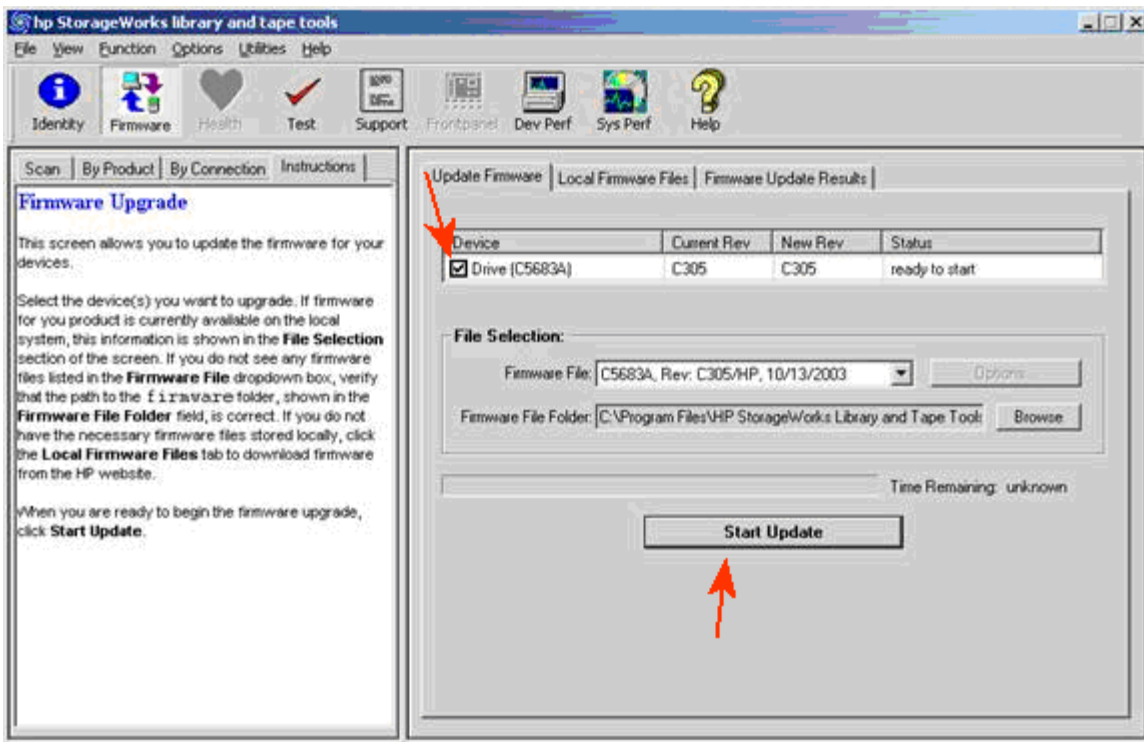


- You have a choice as to which firmware to show, but the default choice is to show the 'latest firmware only' for 'devices on this system'. Select your desired firmware by ticking the box (or clicking the 'Select All' button)....



..... then 'Download'

- Once the latest firmware is downloaded to your local machine, check once again that the Device box is ticked....



..... and start the update

- Once the firmware update is complete, you will see the following screen

