

Initializing interface (78:E7:D1:8C:FD:A8) ... Succeeded

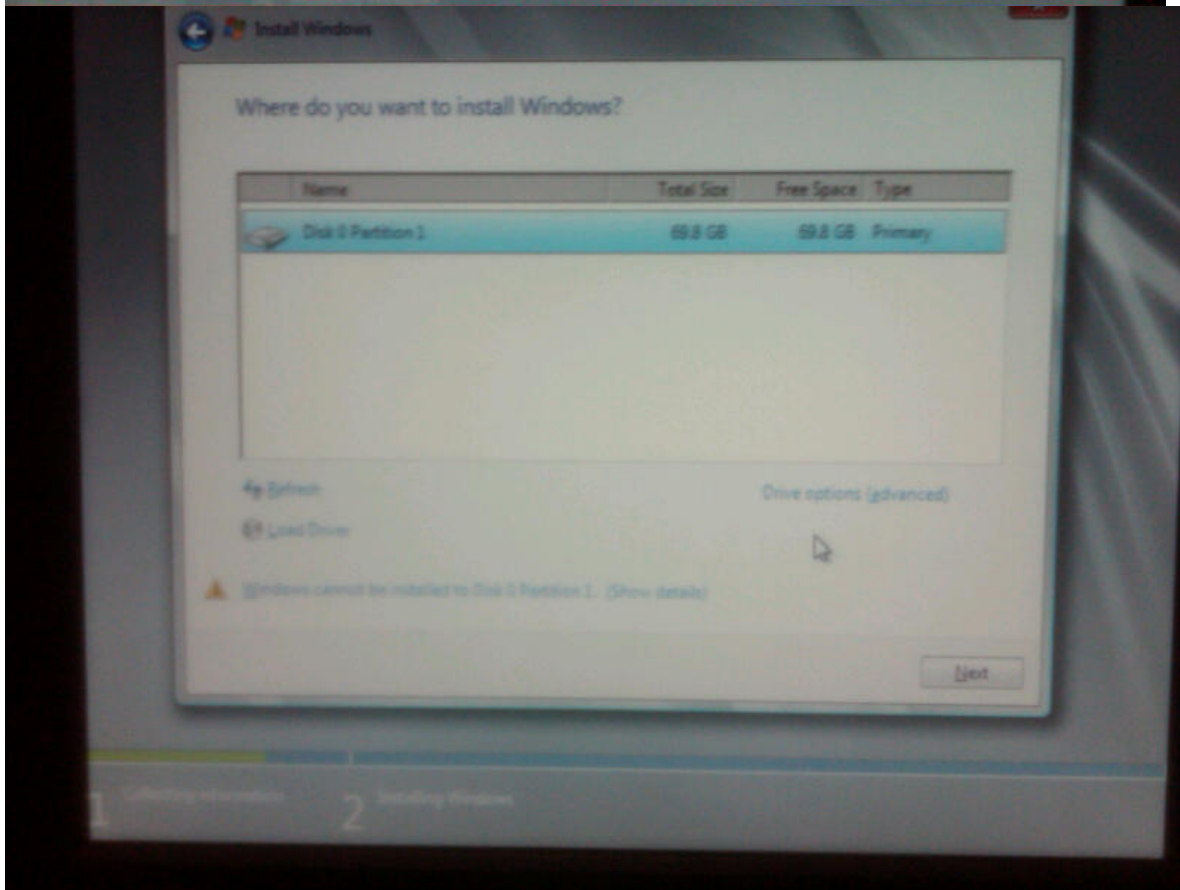
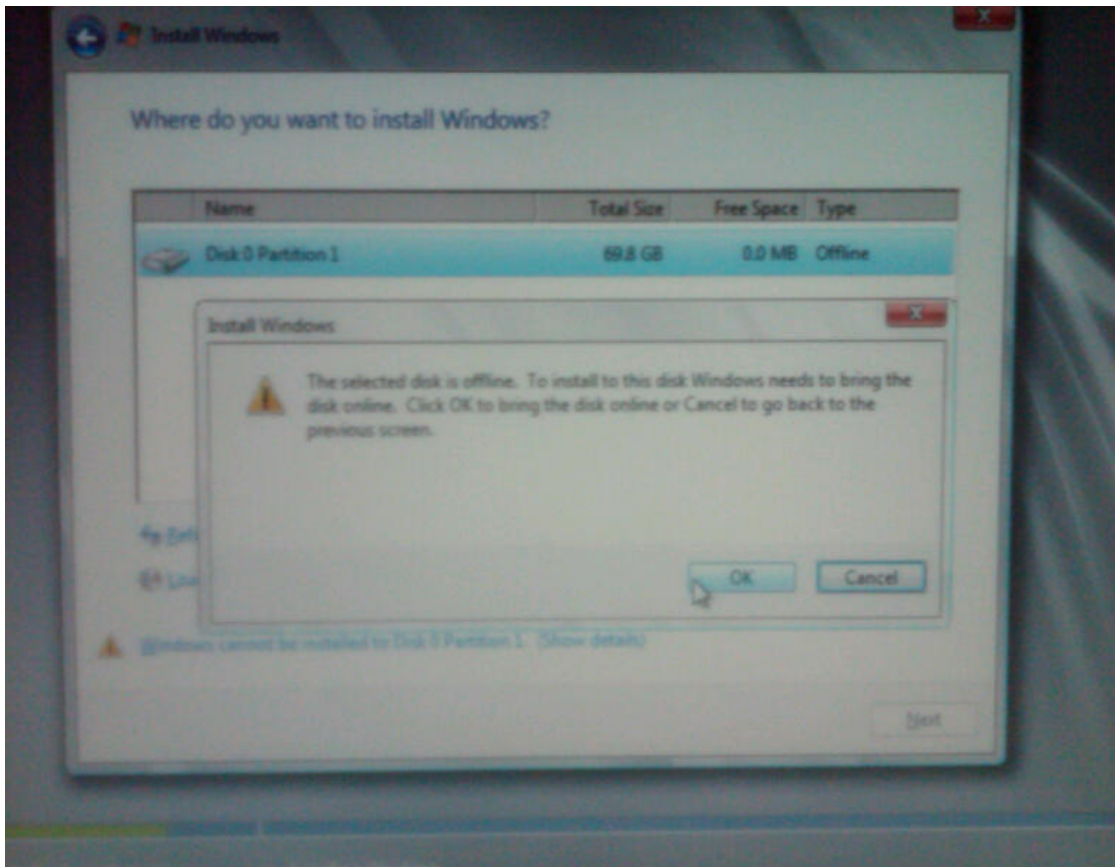
Connecting to iSCSI targets with interface (78:E7:D1:8C:FD:A8)

Initiator Name : iqn.1995-05.com.broadcom.ad.iscsiboot
Host IP Address : 192.168.192.5
MAC Address : 78:E7:D1:8C:FD:A8
Subnet Mask : 255.255.255.0
Default Gateway : 0.0.0.0
1st Target Name : iqn.1986-03.com.hp:storage.nsa2312i.1001daa877
1st Target IP Addr : 192.168.192.1
1st Target TCP Port : 3268
1st Target Boot LUN : 1

Logging in the 1st iSCSI Target ... Succeeded

SCSI Target Drive: HP NSA2312i (Rev: N110)

Booting Next Device ...



Name	Total Size	Free Space	Type
Disk 0 Partition 1	69.8 GB	69.8 GB	Primary

Install Windows

Windows cannot be installed to this disk. This computer's hardware may not support booting to this disk. Ensure that the disk's controller is enabled in the computer's BIOS menu.

OK

Windows cannot be installed to Disk 0 Partition 1. (Show details)

Next

Refresh Delete Format New

Load Driver Extend

Setup was unable to create a new system partition or locate an existing system partition. See the Setup log files for more information.

1 Collecting information 2 Installing Windows