

# HP ProLiant ML115 G5 - Setting up the installation of Windows Server using the NVIDIA embedded controller

---

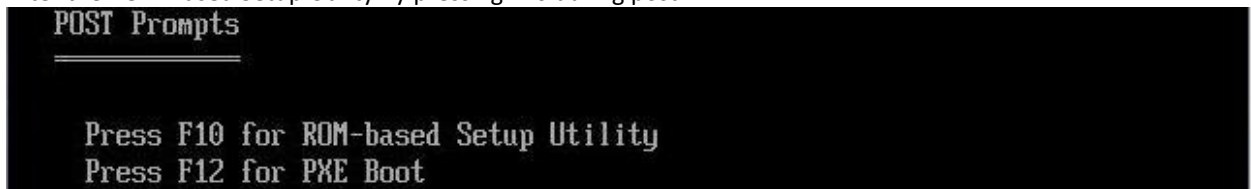
## Information

- This document is a visual help for the installation of Windows Server using the NVIDIA embedded SATA controller, it will provide the pre-installation setup required to complete the installation.
- Please ensure server that the server has the Latest FW revision available, refer to the server drivers and software  
<http://h20000.www2.hp.com/bizsupport/TechSupport/DriverDownload.jsp?lang=en&cc=us&prodNameId=3683706&taskId=135&prodTypeId=15351&prodSeriesId=3683705&lang=en&cc=us>
- Please ensure cabling is properly installed and NO faulty LED's shows up outside or inside of the server, refer to the Maintenance and Service guide  
<http://bizsupport.austin.hp.com/bc/docs/support/SupportManual/c01410662/c01410662.pdf>
- Please ensure server is set to Factory Defaults, if not Clear the CMOS/NVRAM by pressing the Yellow Clear CMOS button located in the system board, next to the IDE ports. Clearing CMOS requires the server to have Power.

---

## Technical Work Instruction

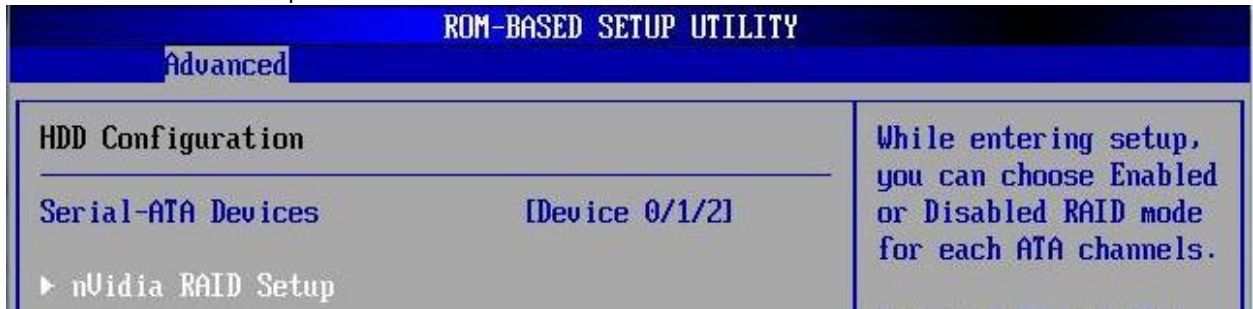
1. Enter the ROM Based Setup Utility By pressing F10 during post.



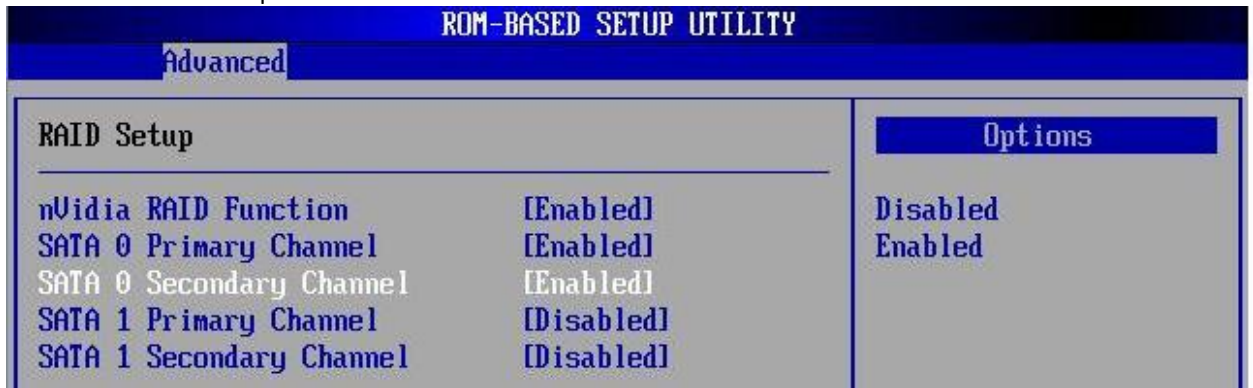
2. Navigate to the Advance settings TAB, enter the HDD Configuration.



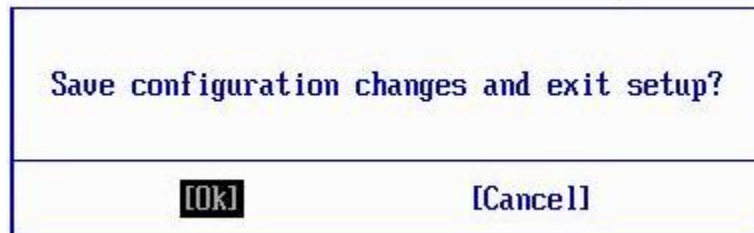
3. Enter the nVidia RAID setup.



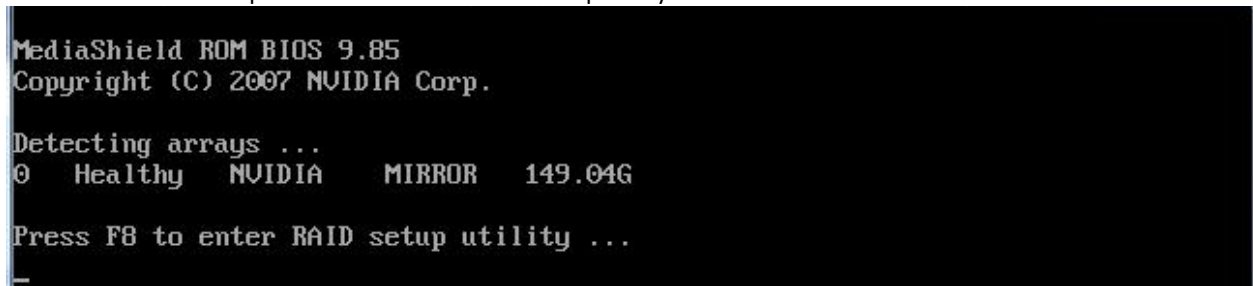
4. Enable RAID and the required SATA channels.



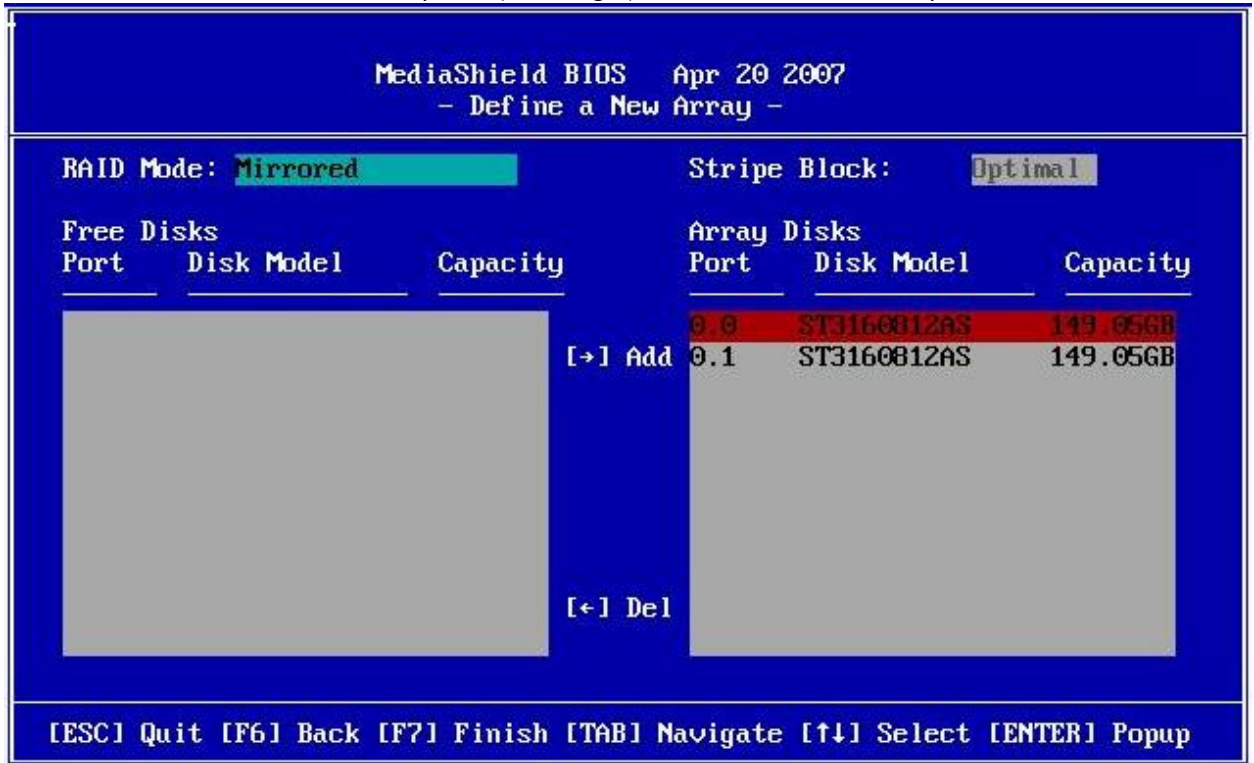
5. SAVE and EXIT by pressing F10 and accepting changes.



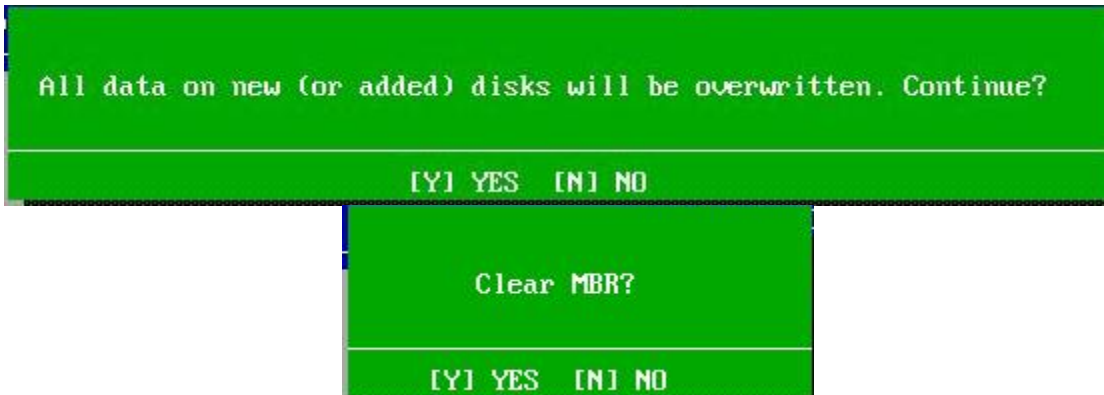
6. Reboot the server and press F8 to enter the RAID setup utility



7. Add hard drives from free disks to Array disks (left to right) and select the RAID mode you want.



8. Click [Y] yes to accept the deletion of data on HDD's (save any DATA in you need to), click [Y] yes to delete the Master Boot Record.



9. Check your Array and hit [Ctrl-X] to exit



10. **Extract** the controller Driver into your floppy Drive, make sure drive is empty before extracting the files

You can use

- w2k3 x64 file name cp008698.exe

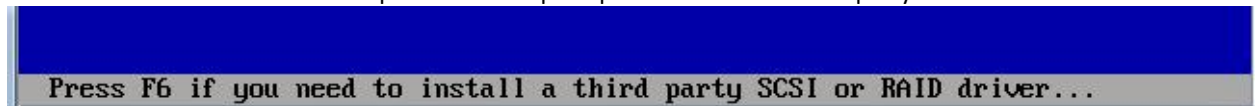
[http://h20000.www2.hp.com/bizsupport/TechSupport/SoftwareDescription.jsp?lang=en&cc=us&swItem=MTX-4810d57f44f74d8cbe18413697&jumpid=reg\\_R1002\\_USEN](http://h20000.www2.hp.com/bizsupport/TechSupport/SoftwareDescription.jsp?lang=en&cc=us&swItem=MTX-4810d57f44f74d8cbe18413697&jumpid=reg_R1002_USEN)

- w2k3 x86 file name cp008697.exe

<http://h20000.www2.hp.com/bizsupport/TechSupport/SoftwareDescription.jsp?swItem=MTX-0dbf82cb9fd24c929b6bdb4da7&lang=en&cc=us&idx=0&mode=4&>



11. Boot from windows server CD and press F6 when prompted to install the third party driver



12. Select the driver from the floppy drive and hit enter



13. Follow the Microsoft wizard to complete the installation of windows.