

## RAID Level Migration (RAID 1 to RAID 5 in this example)

### Compaq Confidential - Need to Know Required

Disclaimer: You are responsible for backing up all data prior to performing the following procedures. Compaq will not be liable for any data loss as a result of performing the following procedures. Compaq takes no responsibility for the accuracy or lack of any information contained herein. Use this information at your own risk.

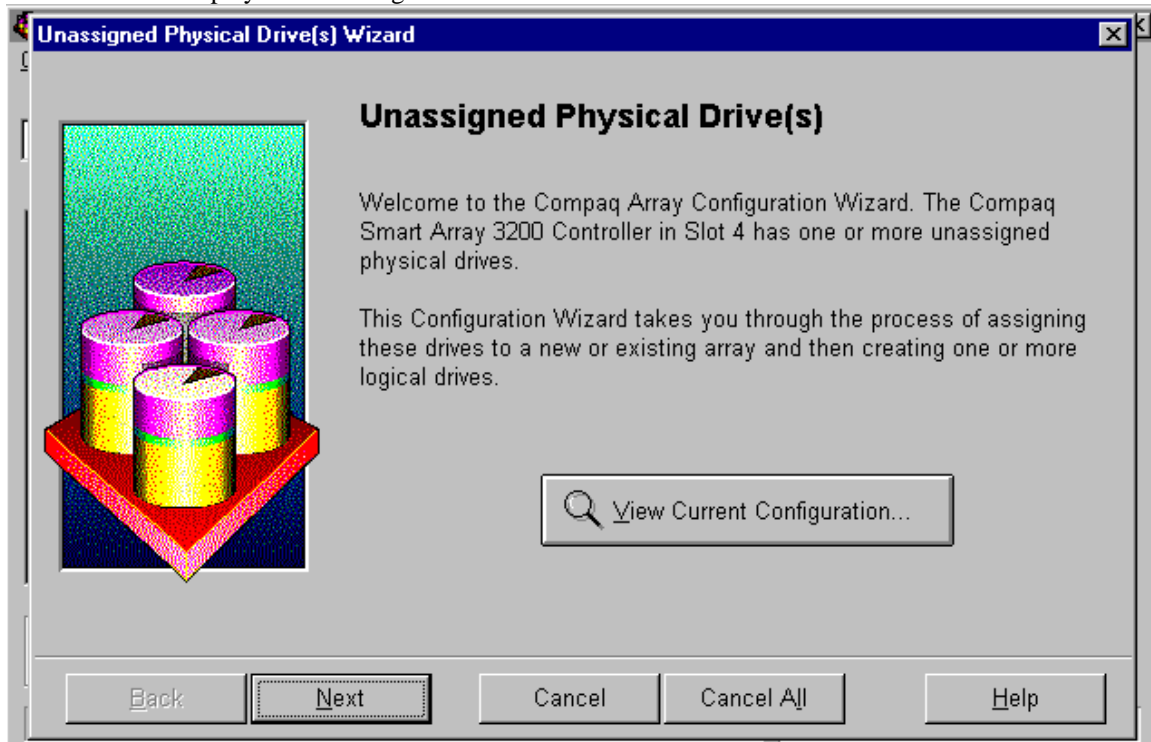
### RAID Level Migration (Not supported on Smart 1, 2/P, 2/E, 2SL, 2DH, 221 controllers)

The Array Configuration Utility allows you to migrate hard drives from any supported RAID level to any other supported RAID level without destroying data in the process. In addition, the operating system can be running while the array controller is migrating data from one RAID level to another.

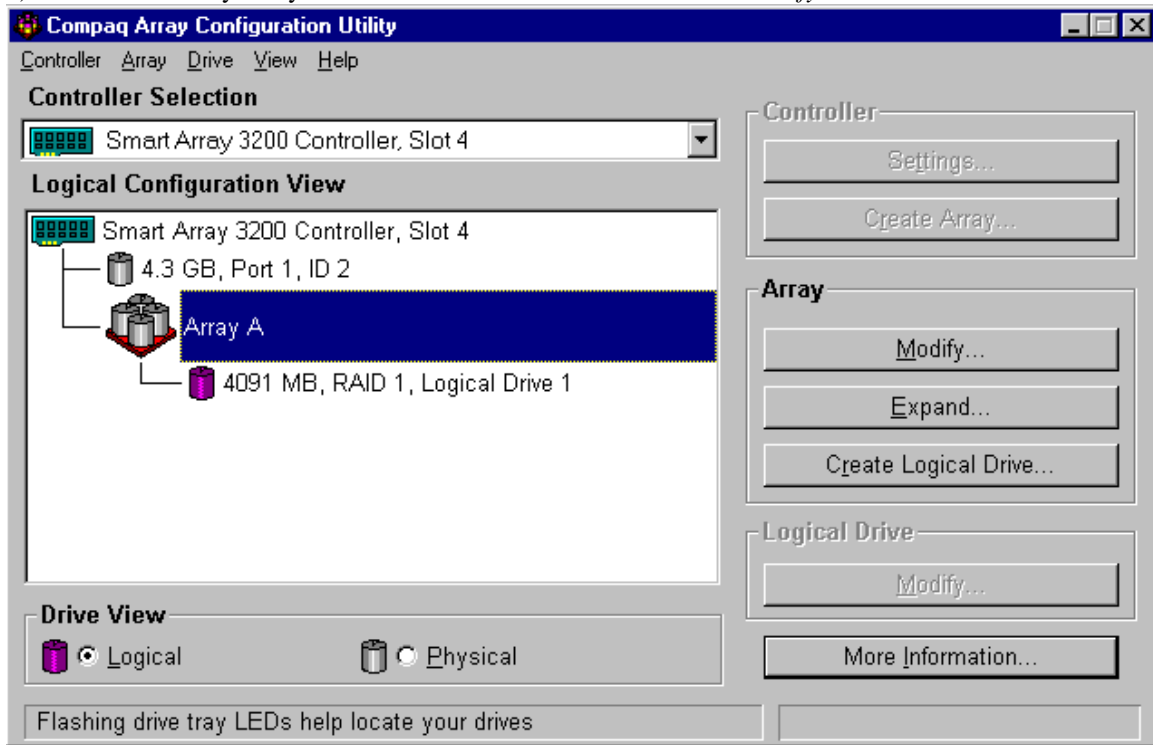
Warning: Back up all data prior to attempting the following procedure. In addition, you should be using the latest firmware with your controller and running a recent version of the Array Configuration Utility.

In this example, the original array consists of two 4.3GB hard drives in RAID 1. Another 4.3GB hard drive is then added. The Array Configuration Utility will be used to migrate data into a RAID 5 set.

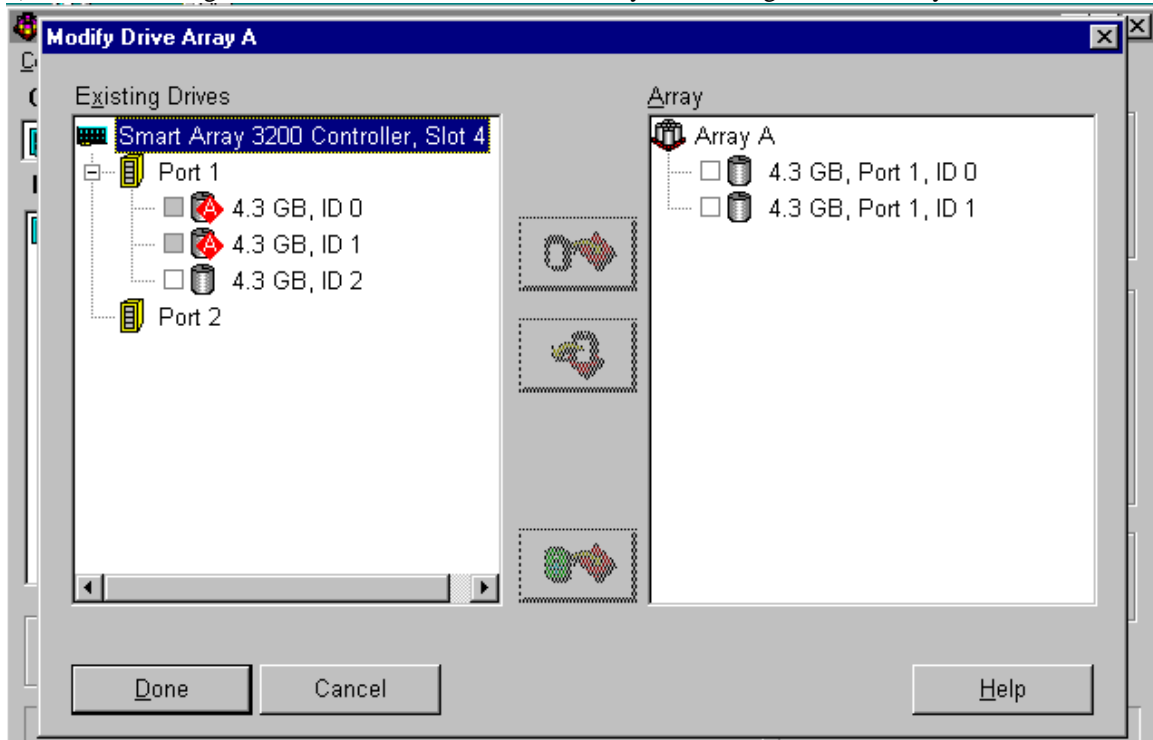
1) Run the Array Configuration Utility. The Array Configuration Utility will detect the hard drive that has been added and display the following screen. Click on *Cancel*.



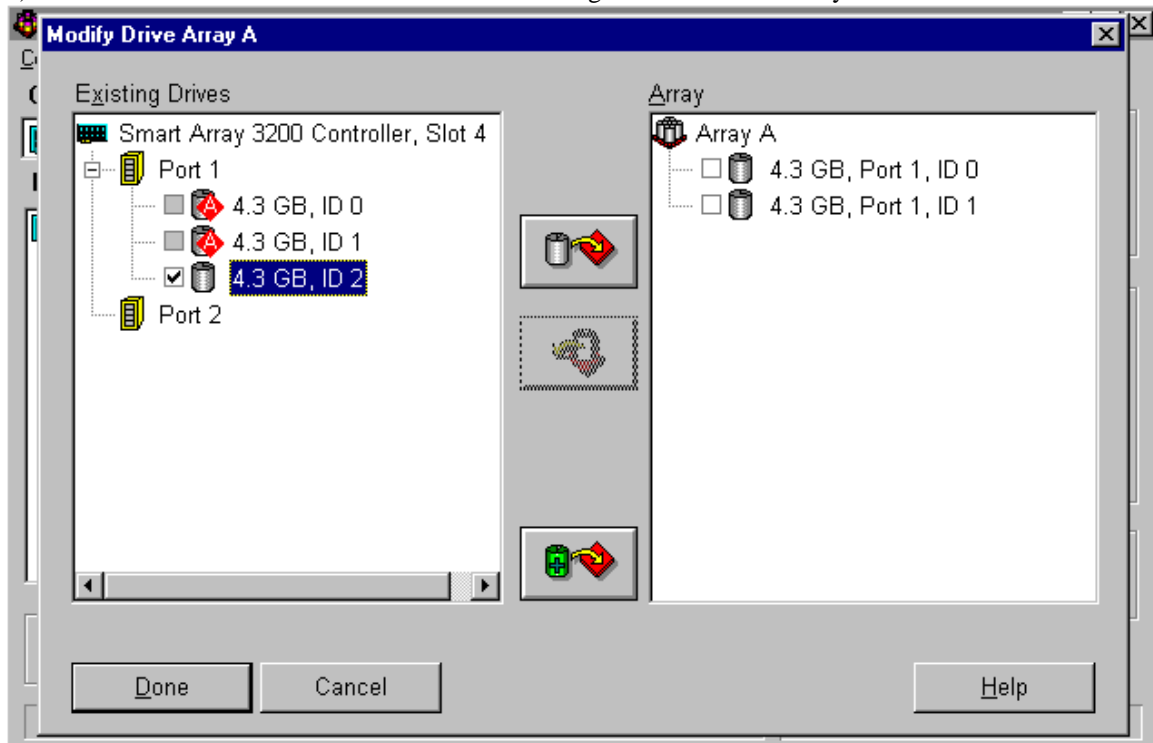
2) Click on the array that you wish to add the hard drive to and then *Modify*.



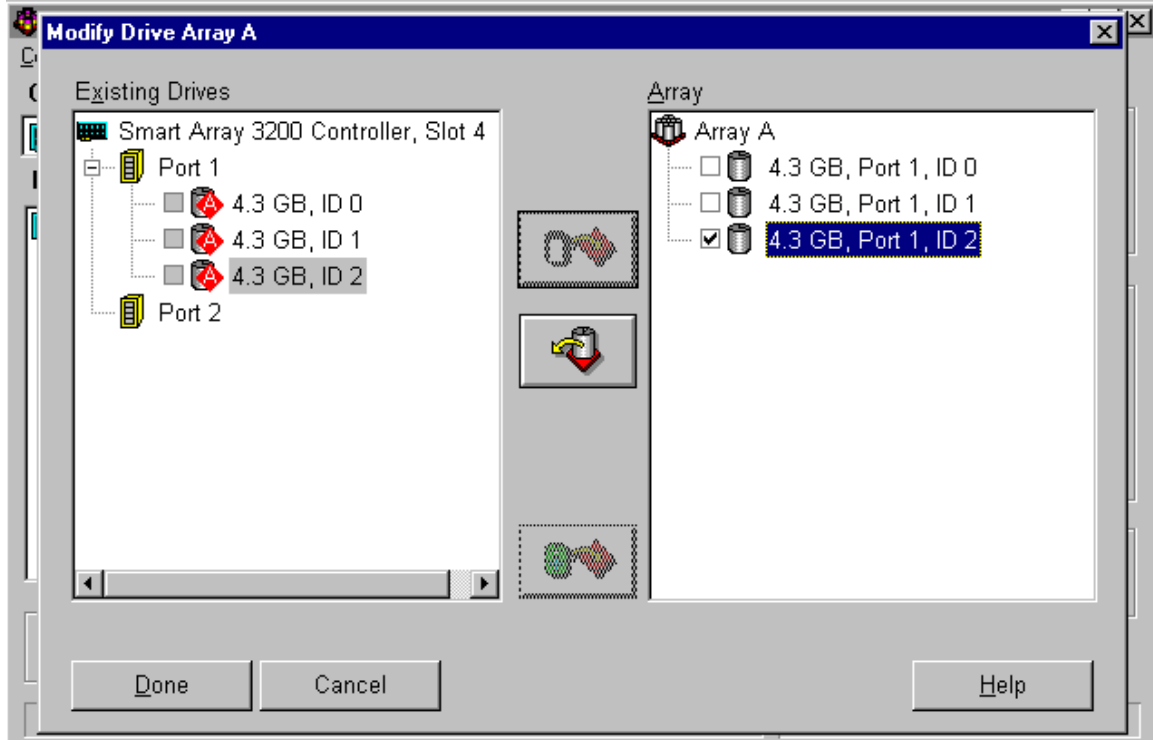
3) At the following screen, click on the drive that has not yet been assigned to the array.



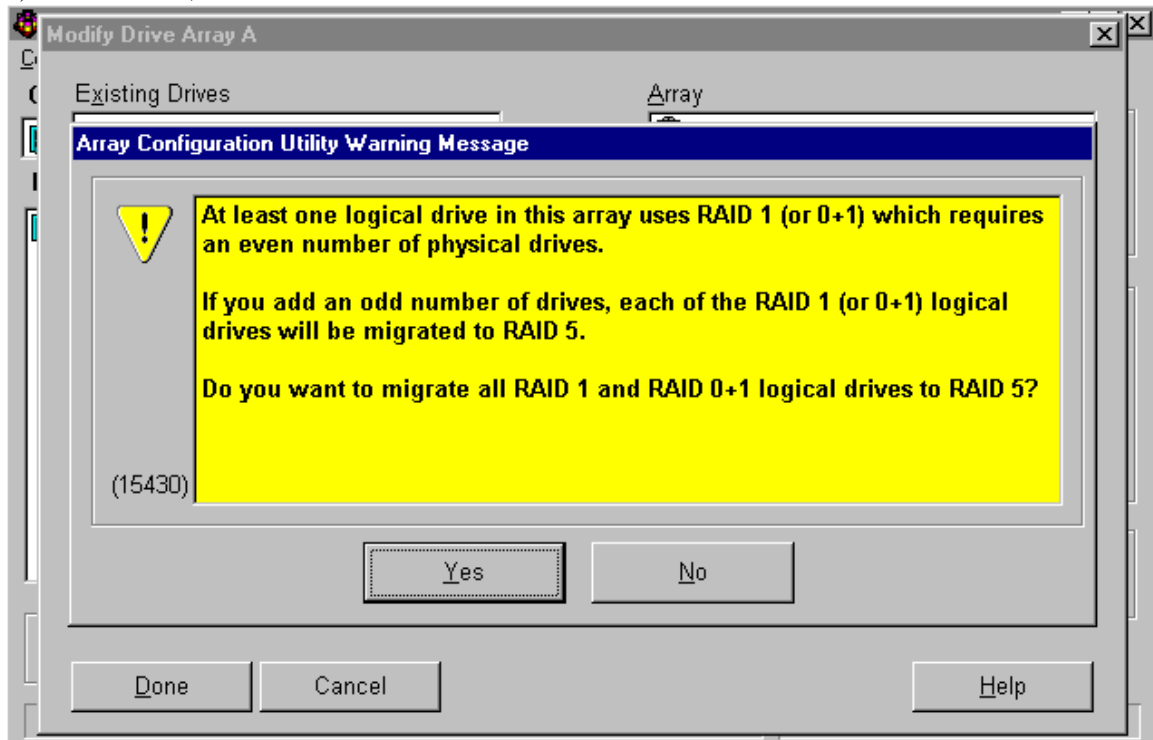
4) Click on the icon in the middle of the screen to assign the drive to the array.



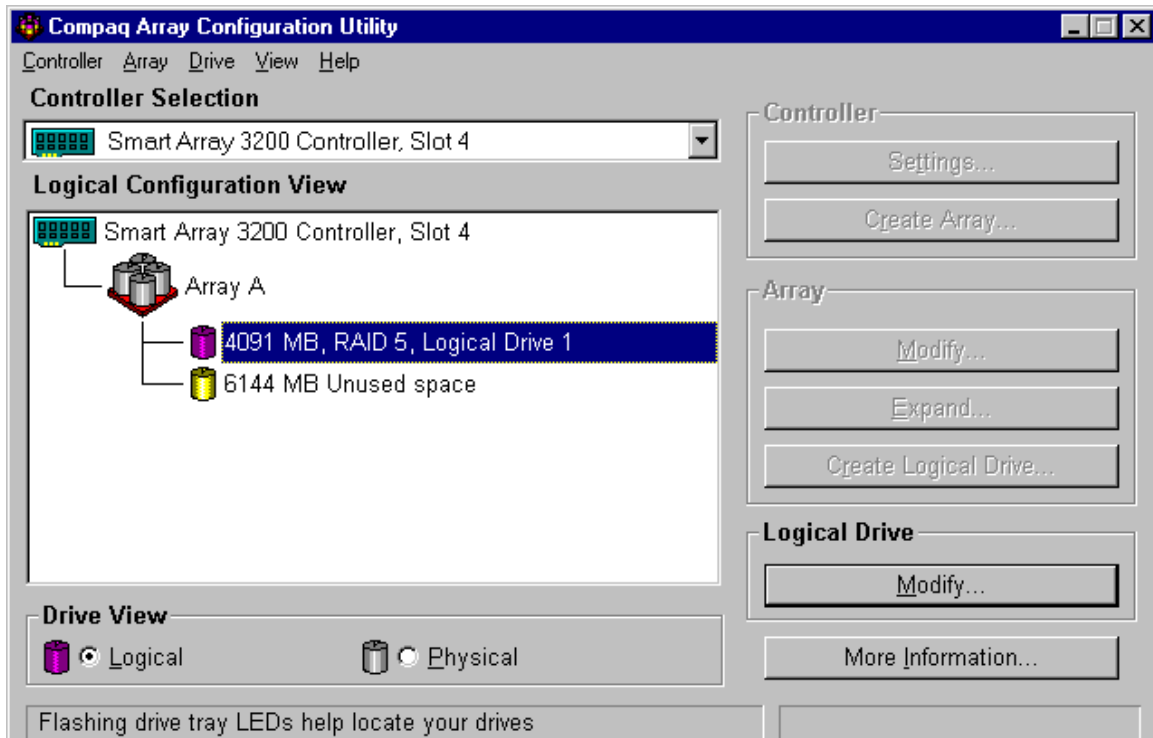
5) Click on *Done*.



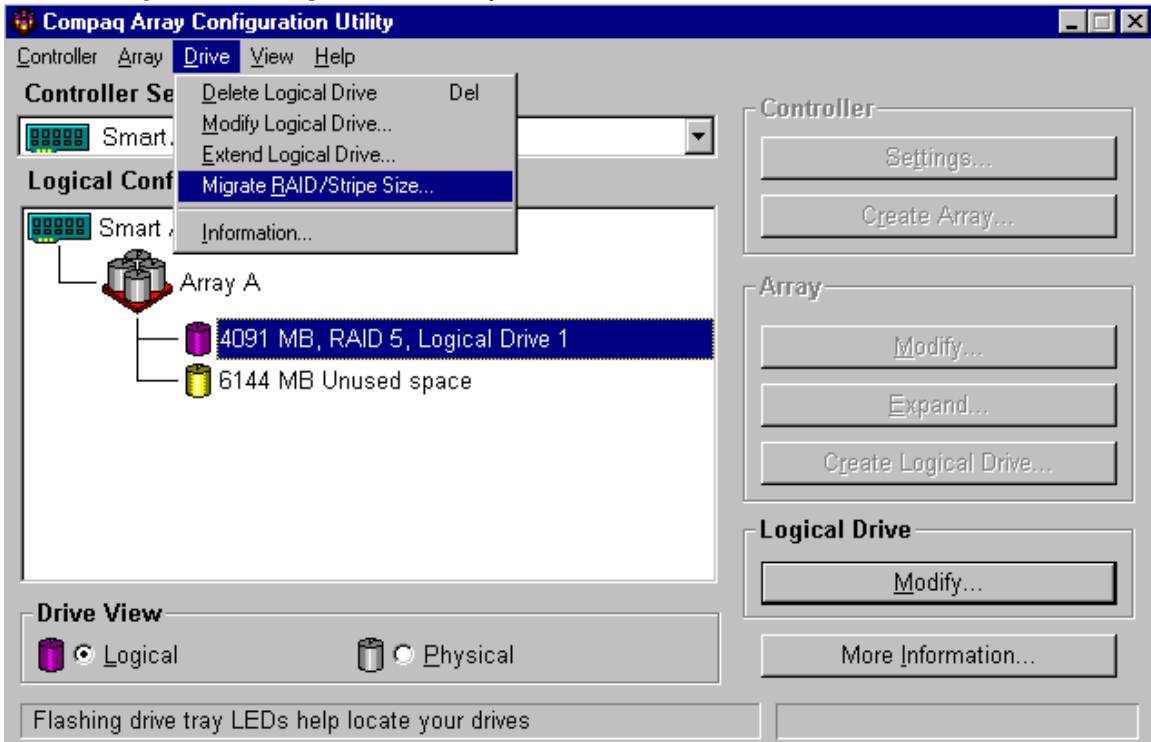
6) At this screen, click on *Yes*.



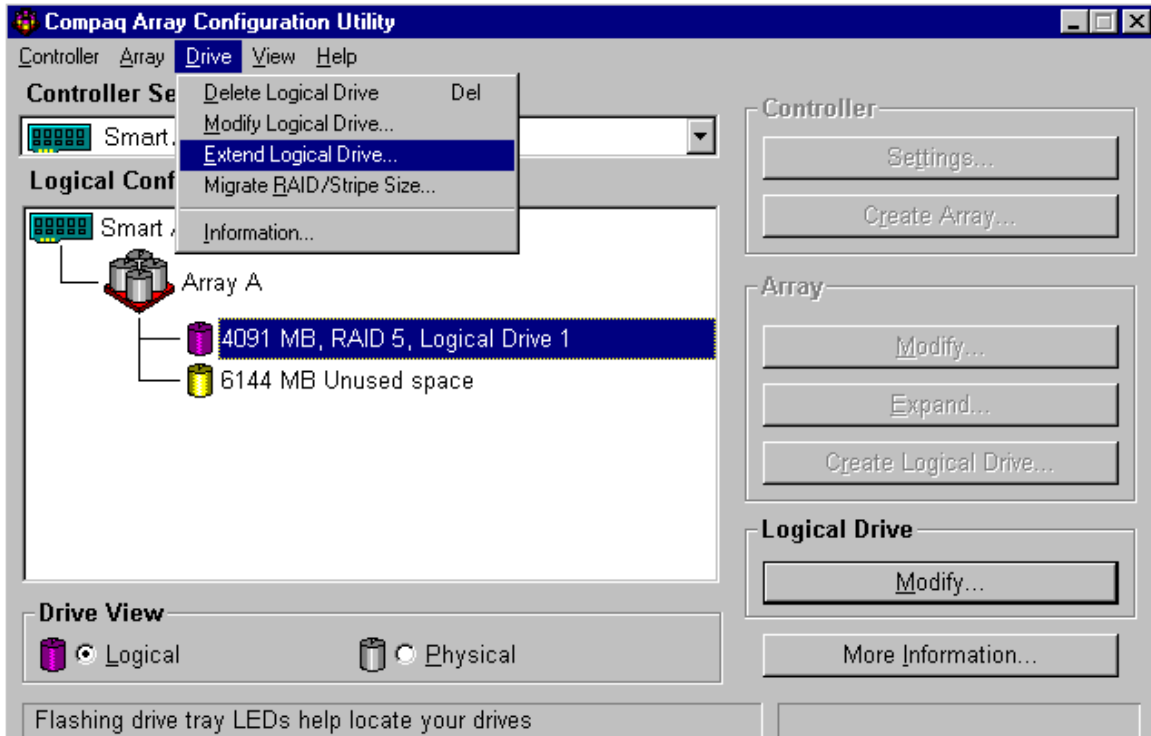
7) Click on the logical drive you wish to migrate raid levels. Then Click on the *Drive Menu*.



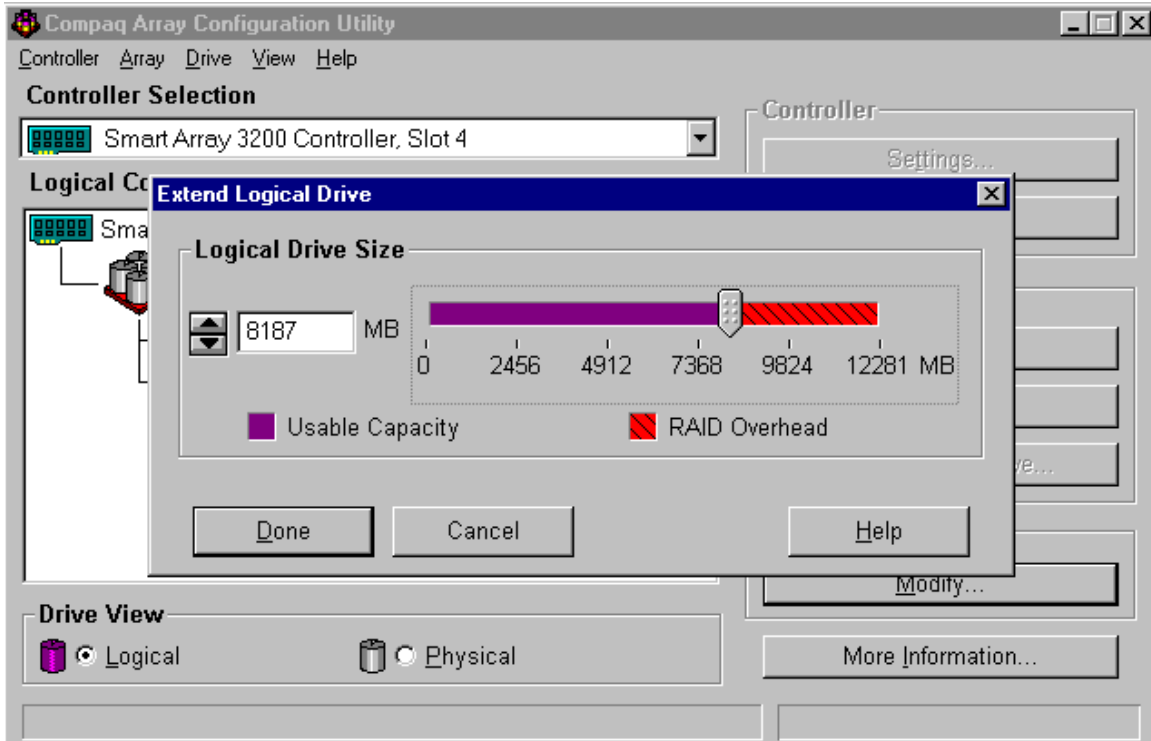
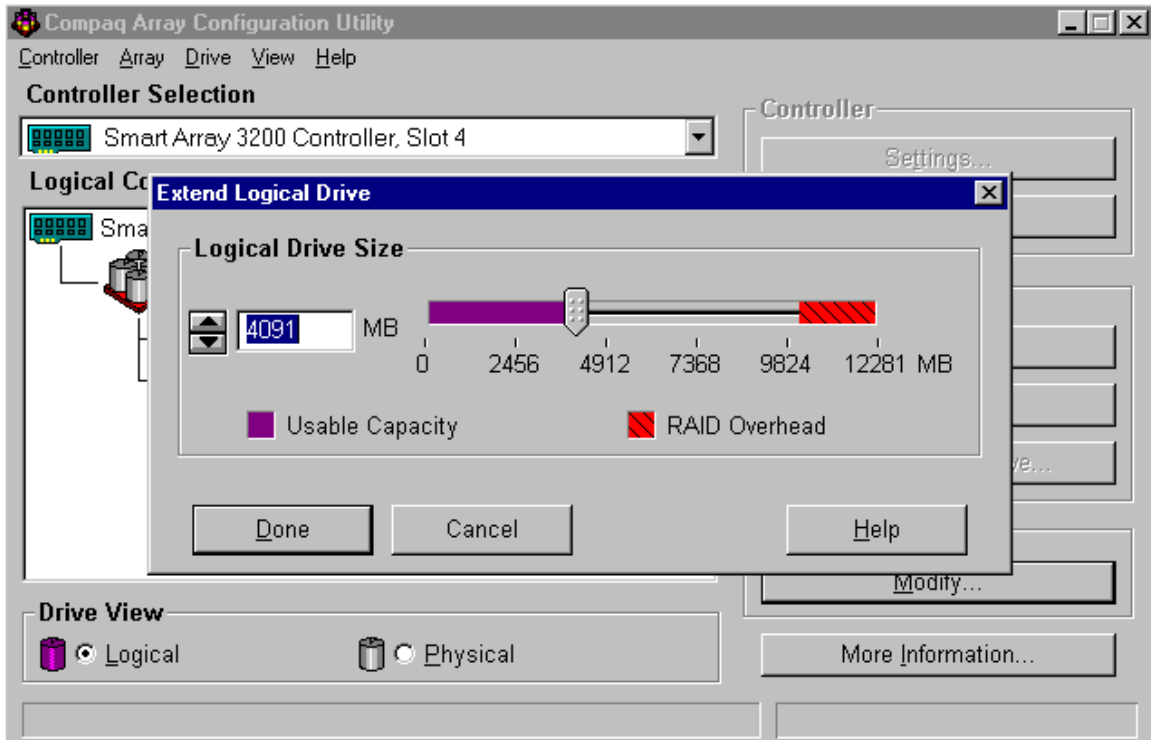
8) Select *Migrate RAID/Stripe Size* and verify on the next screen that RAID level 5 is selected.



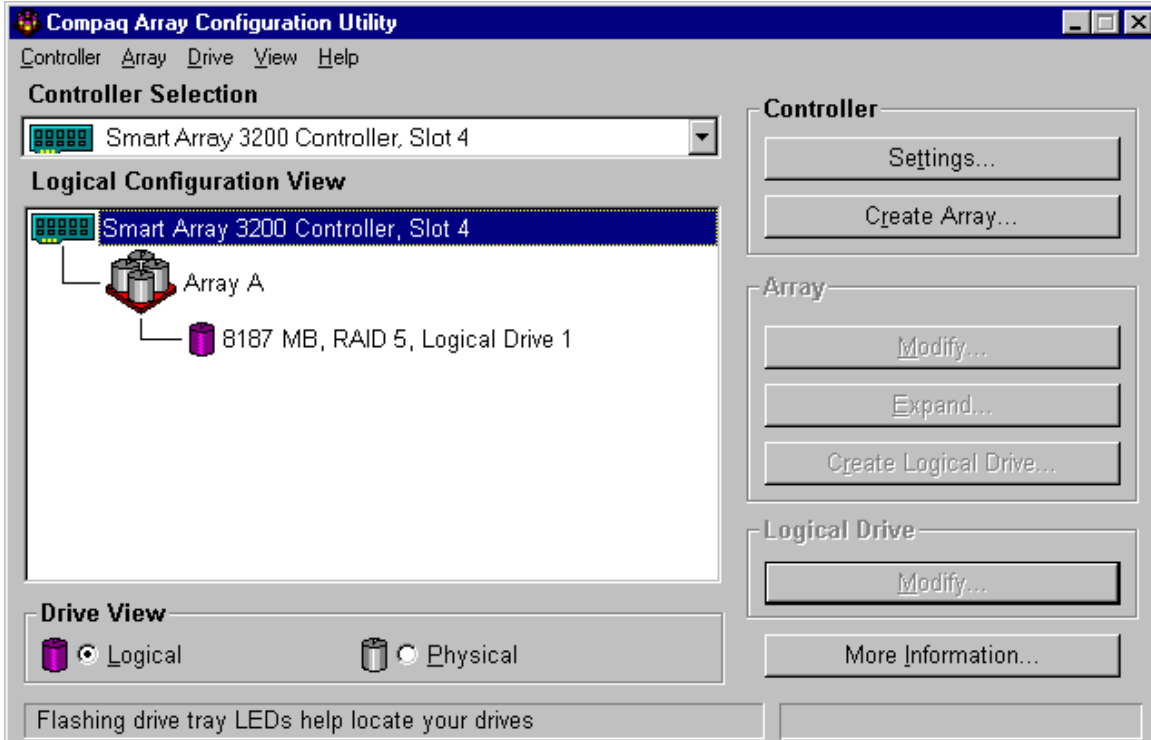
9) At this stage, the logical drive is still the same size prior to the attempt to migrate RAID levels. To incorporate unused space from the added physical hard drive, click on *Drive* and then *Extend Logical Drive*.



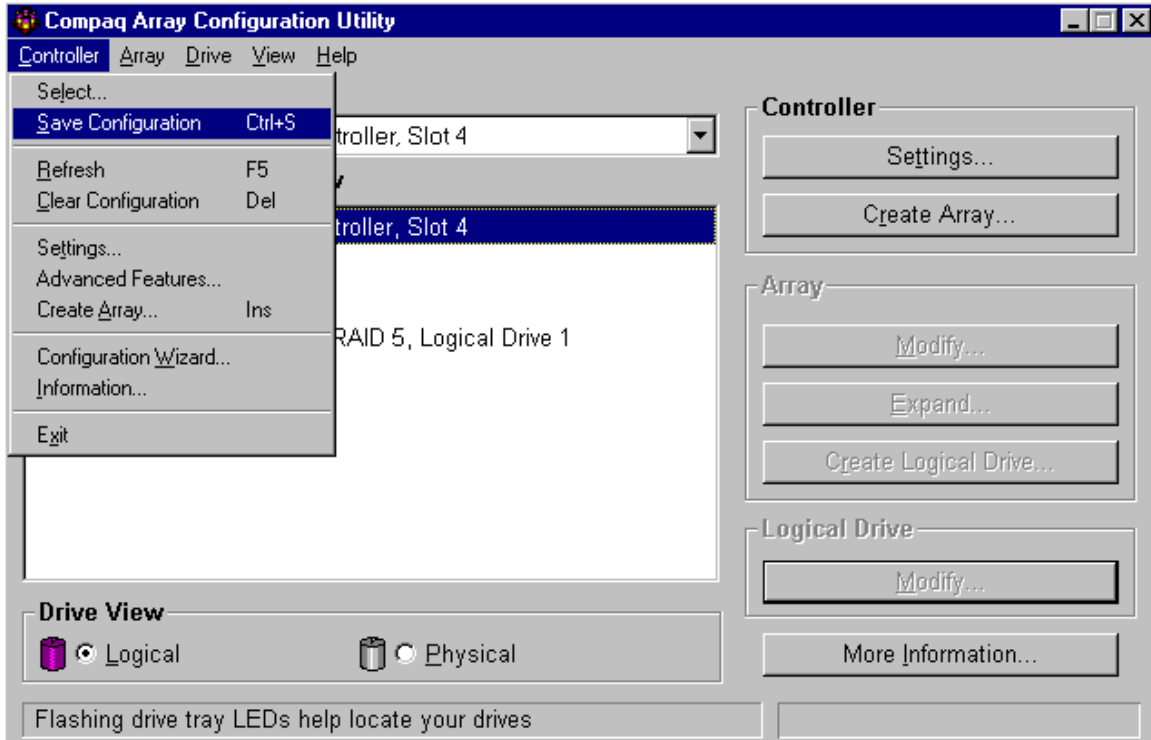
10) Use the mouse to manipulate either the bar or the up arrow to increase the size of the logical drive. Then click on *Done*.



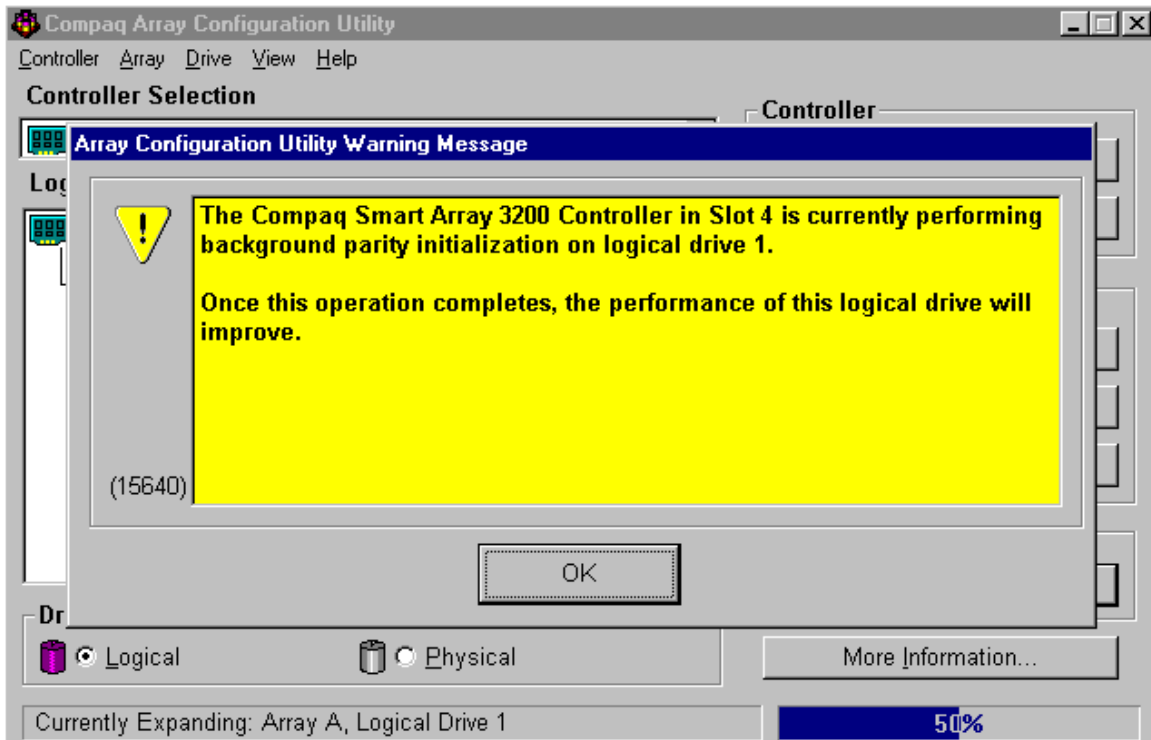
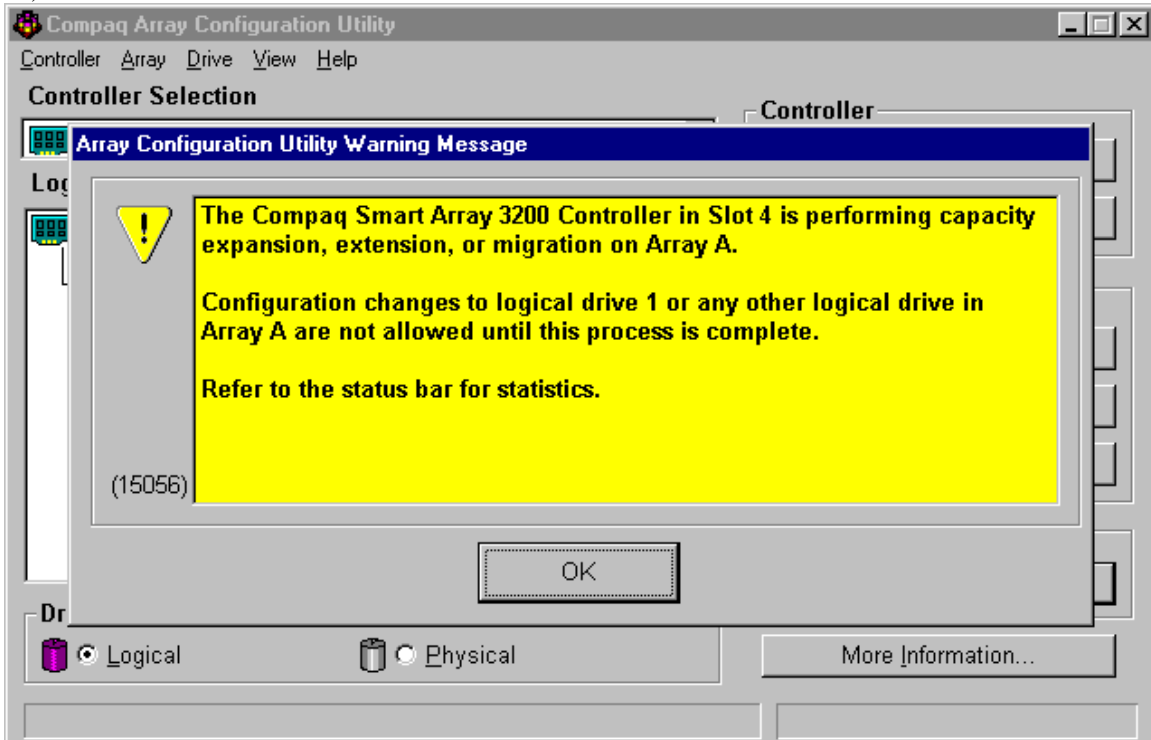
11) At this stage, the migration of raid levels has NOT actually begun. In the next step, you will save the configuration.



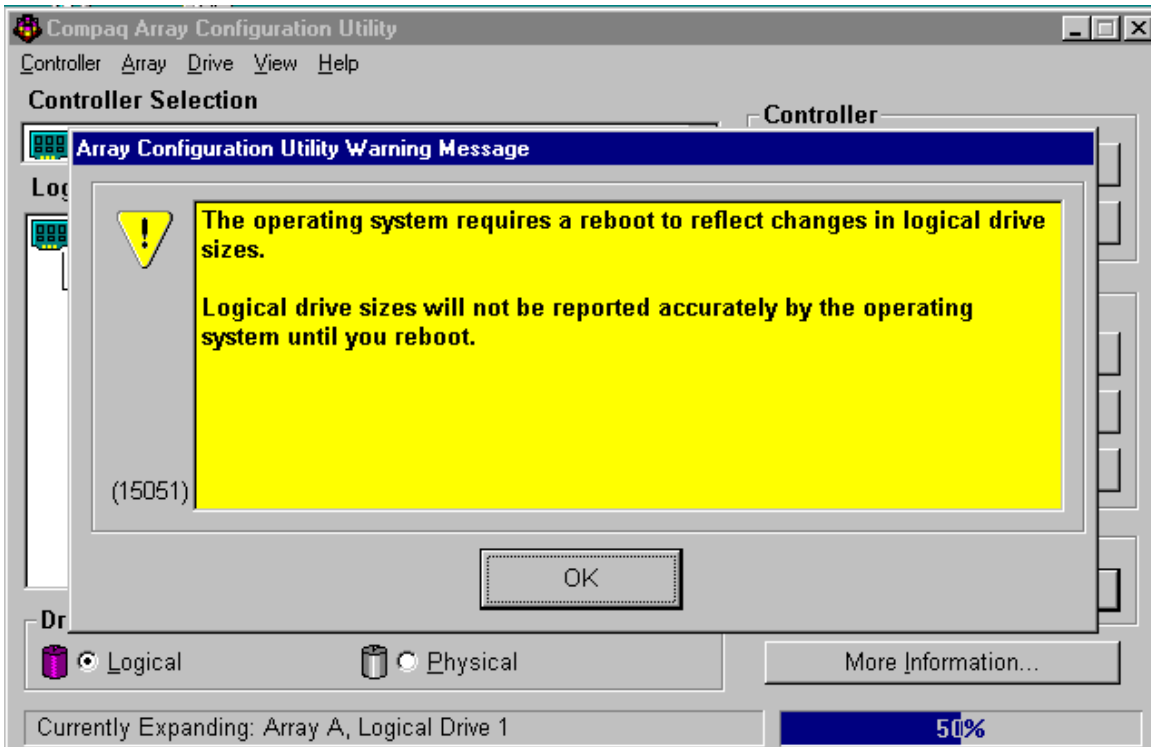
12) Click on the *Controller* menu and then *Save Configuration*.



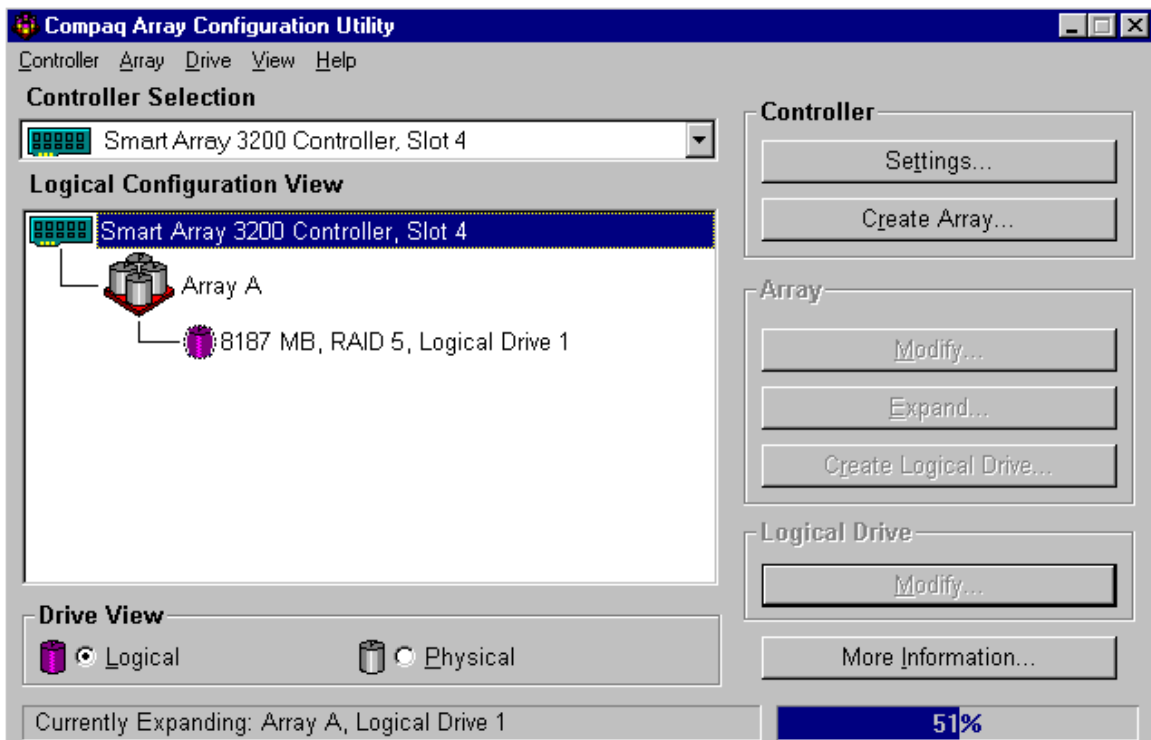
13) The next three screens are informational.

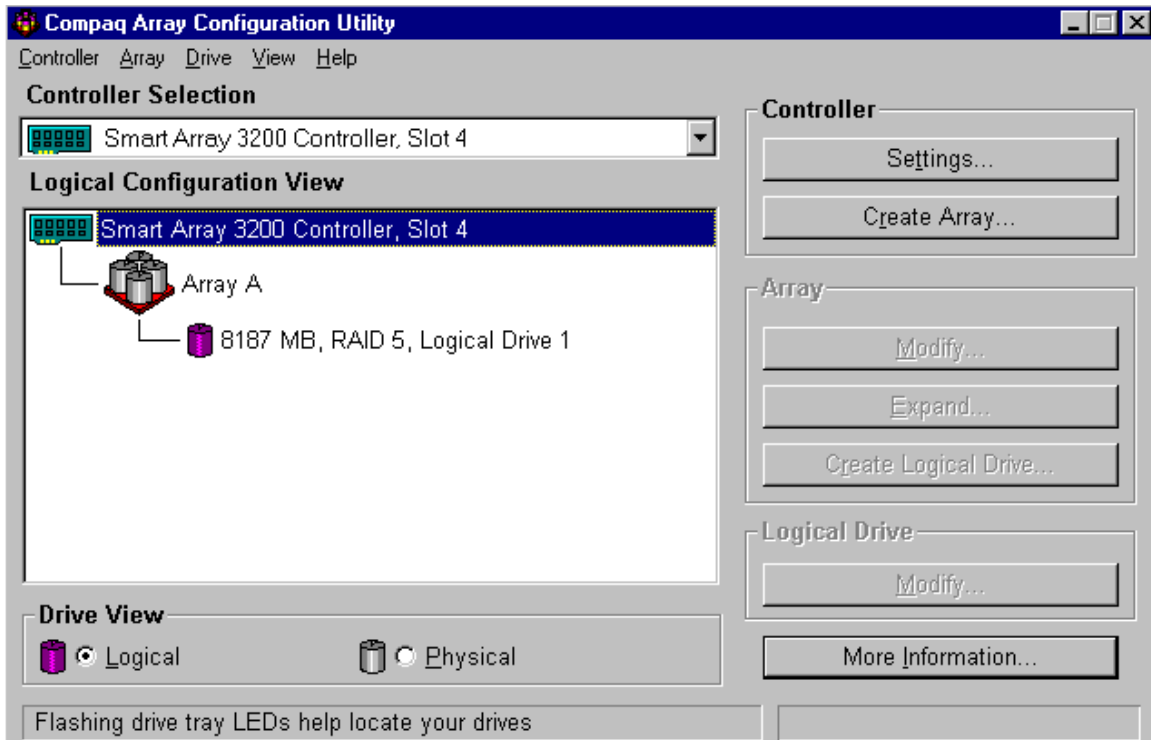






14) The purple cylinder representing the logical drive will have a bloated figure during the migration process. In addition, a percentage progress bar will show on the lower right side of the screen. Another program that allows you to monitor progress of the migration is Compaq Insight Manager.





15) Although the logical drive has been extended, you must reboot the server and then work at the operating system with any partitioning requirements.