

hi

I found a workaround that you can try in case you have not fixed it

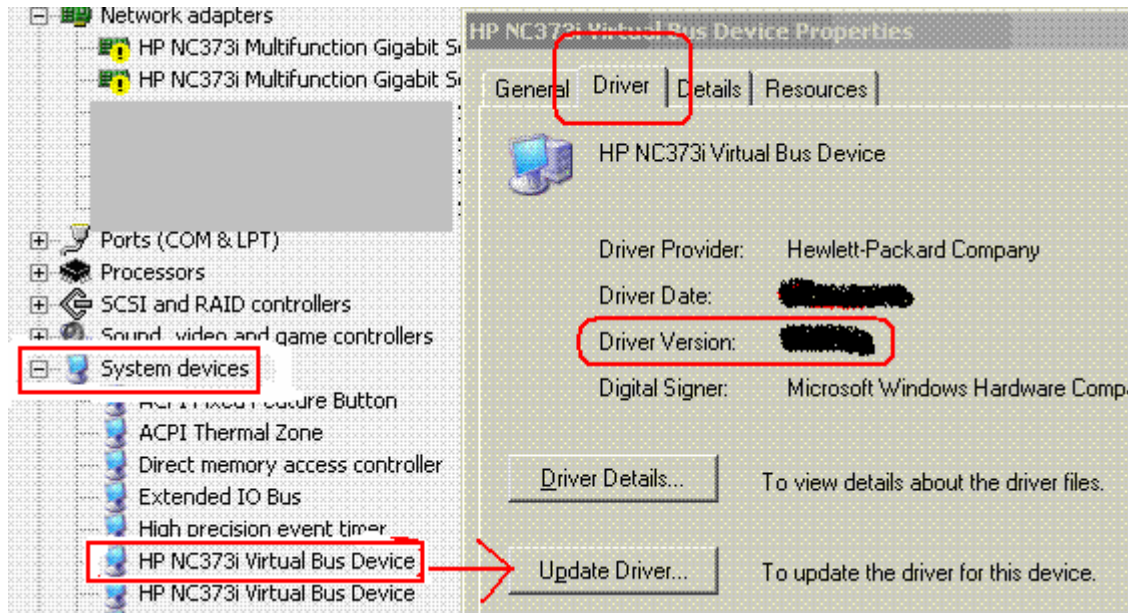
try first with version 3.7.23.0 and if it works
try 4.1.5.0

I tested myself with 3.7.23.0

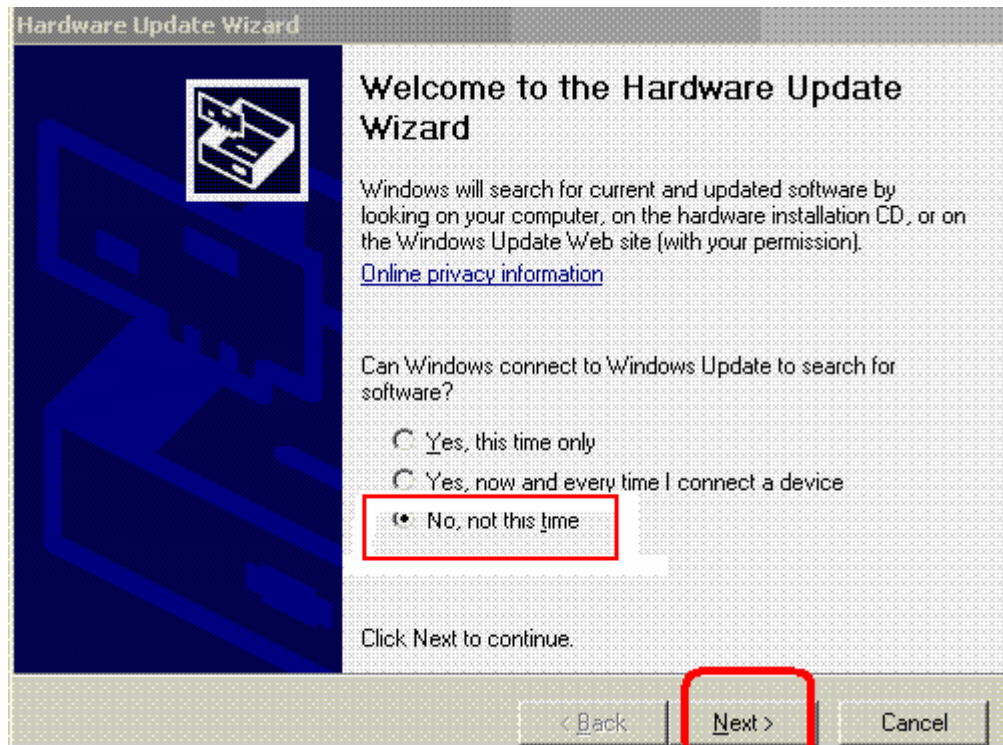
first install the version that works according what I read 3.0.7.0 works for you

so install that one and follow this:

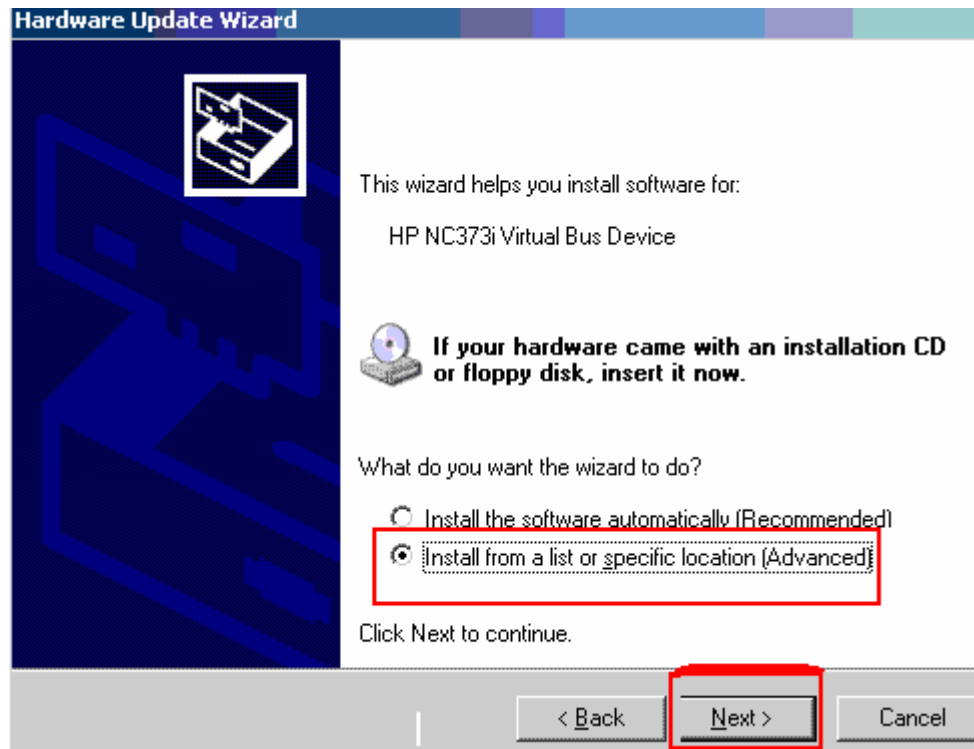
1. go to device manager.
2. Select system Devices
3. Select HP NC373i Virtual Bus device. Open it
4. Select driver tab, click on update driver



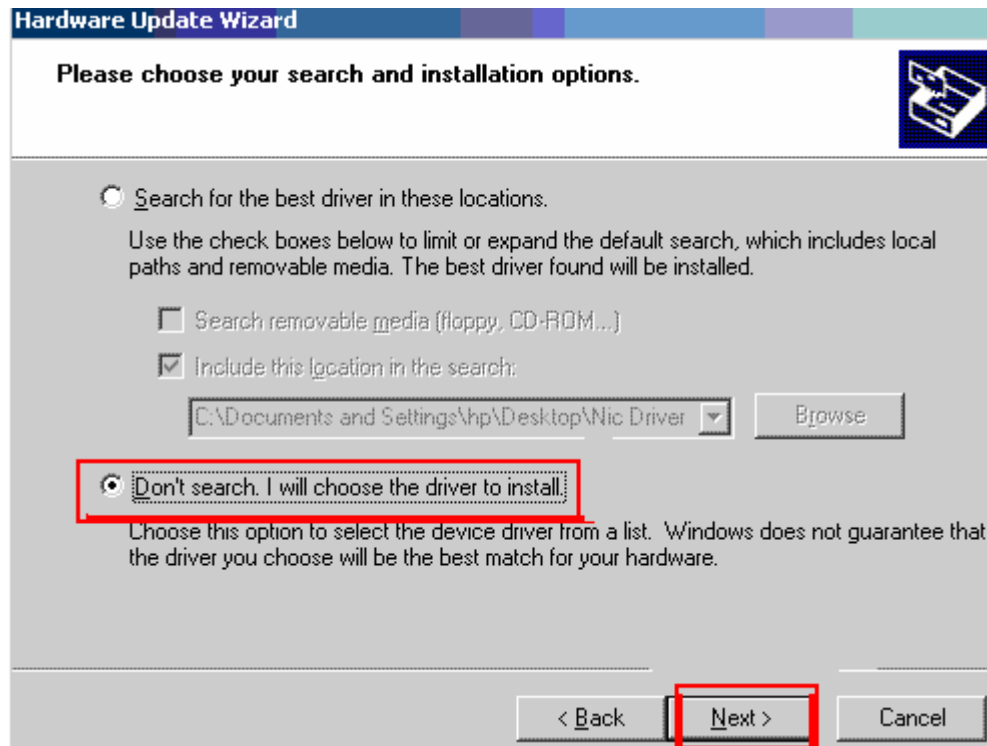
5. When the new Window opens select last option (we have to install driver manually)



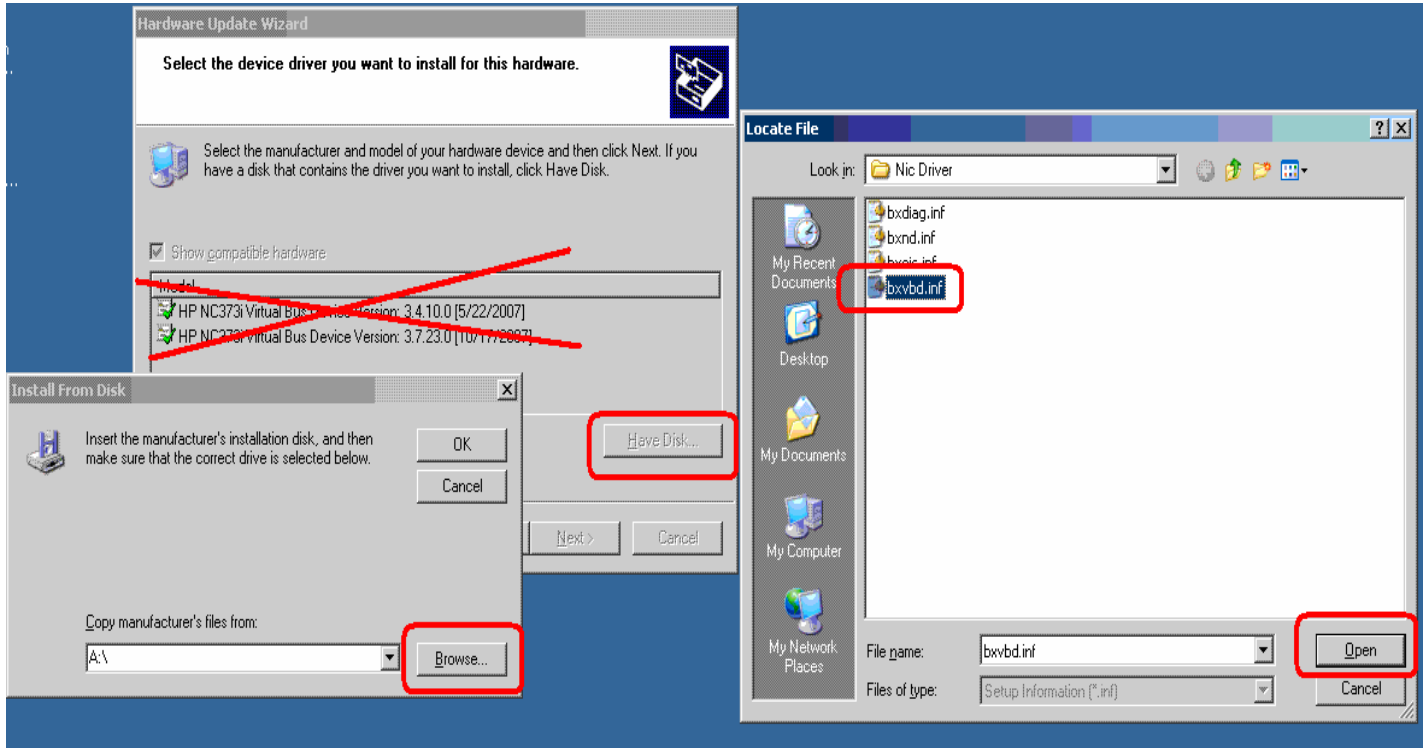
6. Select install from a list (second option)

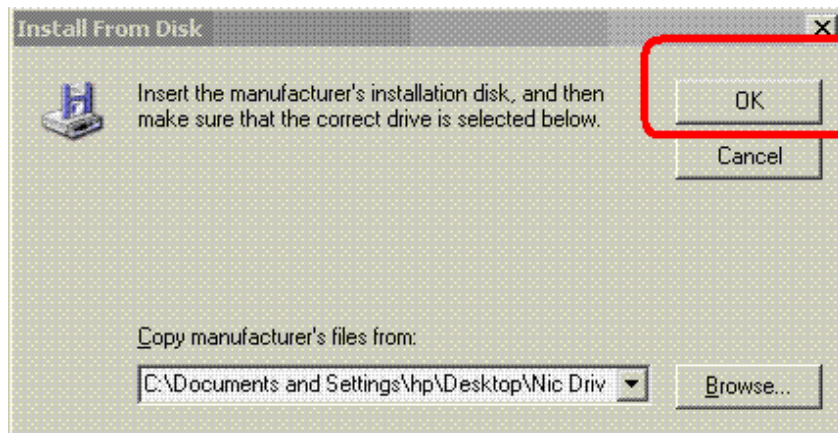


7. Select second option. -> Don't search. I will choose...



8. Don't select any of the drivers listed – ignore them – instead of that
Click have disk and browse where you extracted the exe for **3.7.23.0** version and select **bxnd.inf** file. Open.
OK





And finish

You will install the drivers

It is much better going to 3.0.7.0 to 3.7.23.0 instead of the latest because it will be a big jump and Drivers don't behave very well when you do such a change.