



Mise à jour du firmware d'un switch HP Procurve 2324 Unmanaged

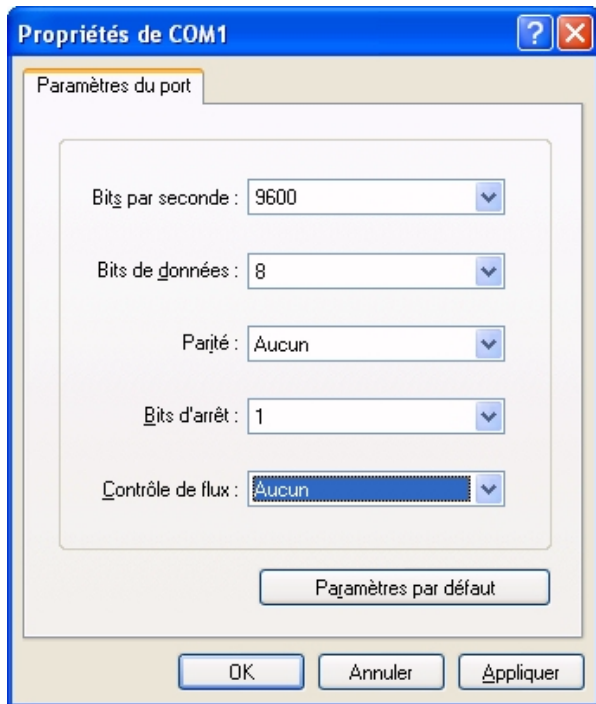


Matériel
v1.0 / Août 2003

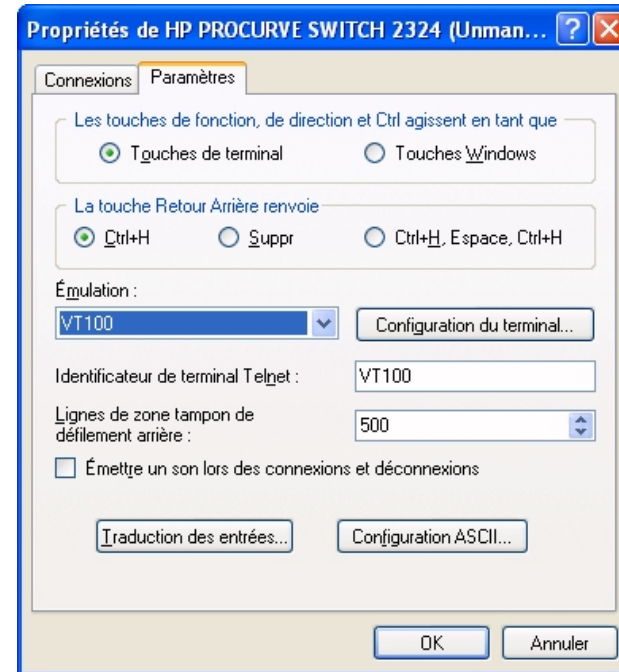
Les antisèches informatiques de la
D.R.E.E.

Réf : Matériel-FA-Mise à jour du firmware des switches HP Procurve 2324 Unmanaged-082003.doc

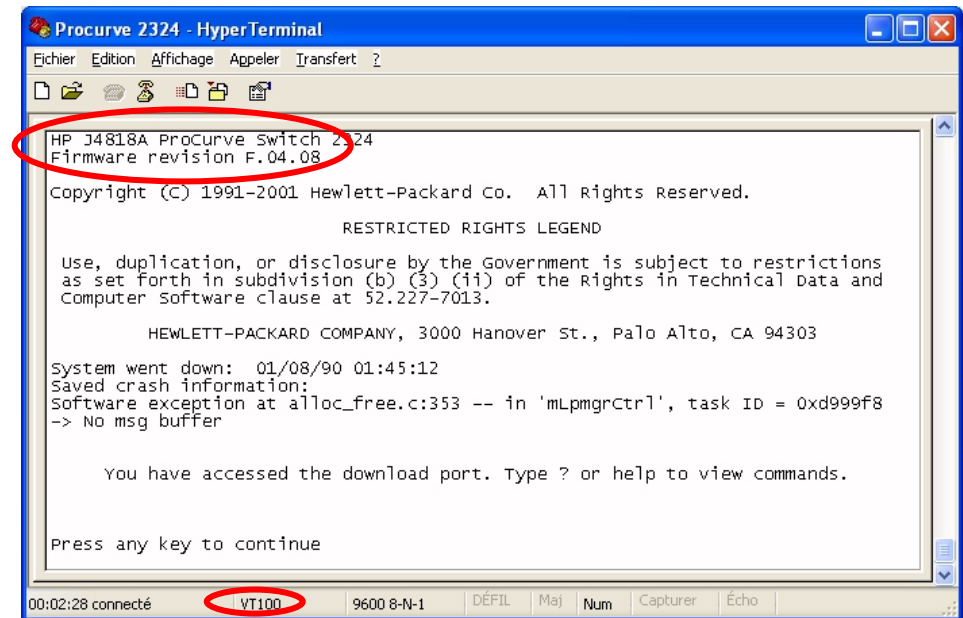
1. Obtain the latest firmware from <http://welcome.hp.com/country/us/eng/support.html> (on August 6th, 2003, F.05.17)
2. Using a null modem serial cable (9 pins female – 9 pins female / HP Part number 5184-1894)(sometimes called Laplink cable), connect a serial port of your PC to the switch "Download port"
3. Run the hyperterminal (on a Windows XP Pro Workstation, click Start / Accessories / Communications / Hyperterminal), specify on which serial port (COM1 or other) the laplink cable is connected and use the following settings :



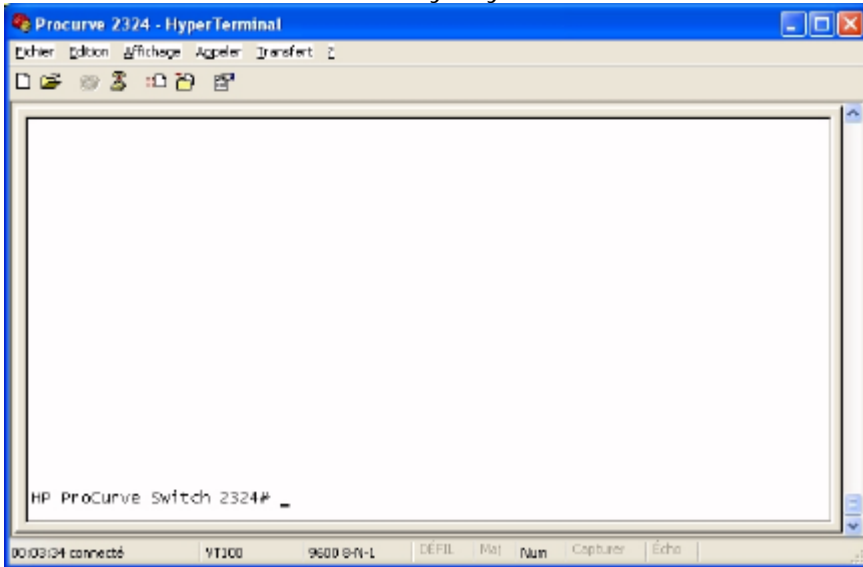
Select menu File / Properties and select VT100 Emulation



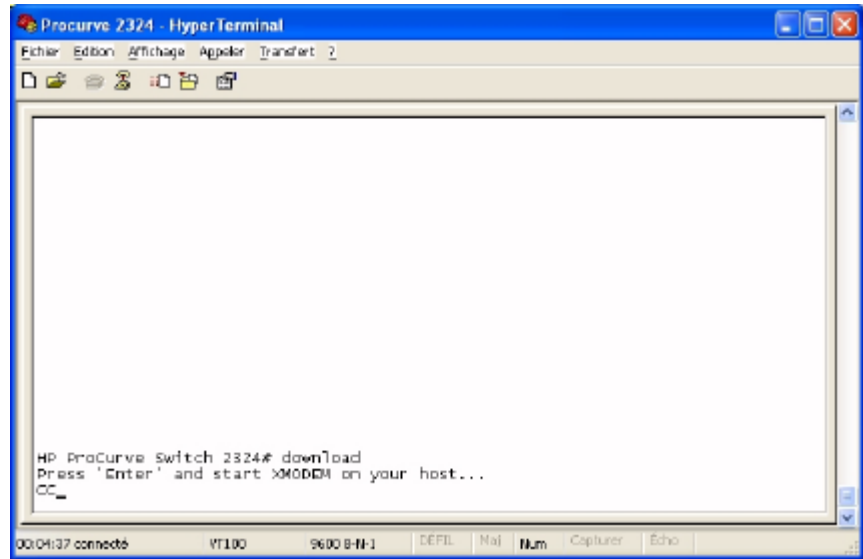
Click OK, then hit the ENTER key twice -> you should get this window :



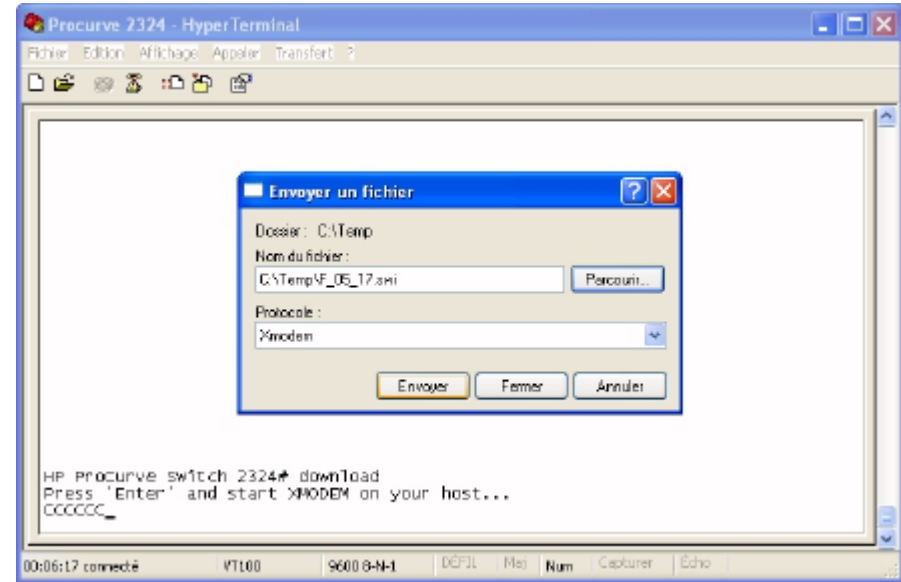
Hit any key...



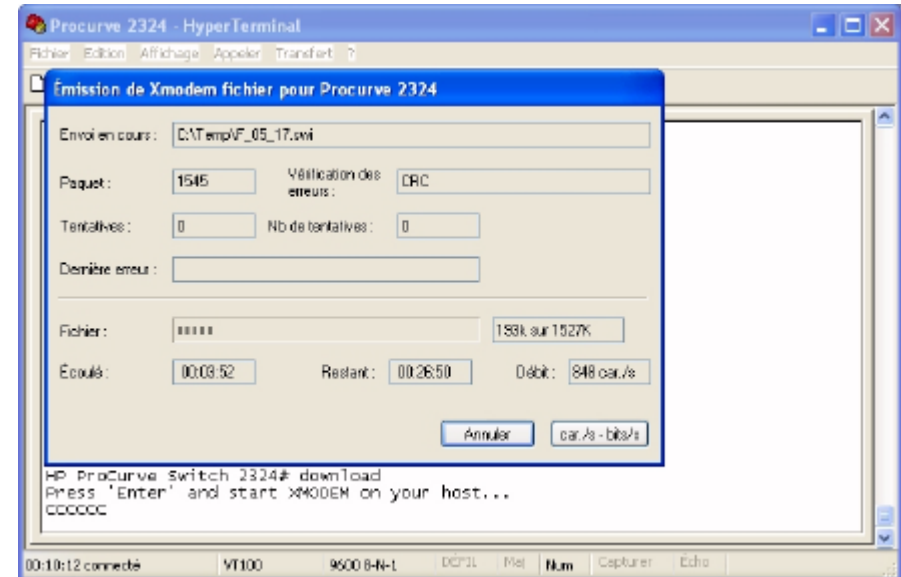
...then type download and hit ENTER...



...Select Transfer / Send a file, then browse to the firmware file and choose Xmodem as protocol...



Click Send : the file transfer should begin and last about 30mn



© D.R.E.E. 2003 / Bureau 1C / Correspondants Informatiques / Damien ROUAUD