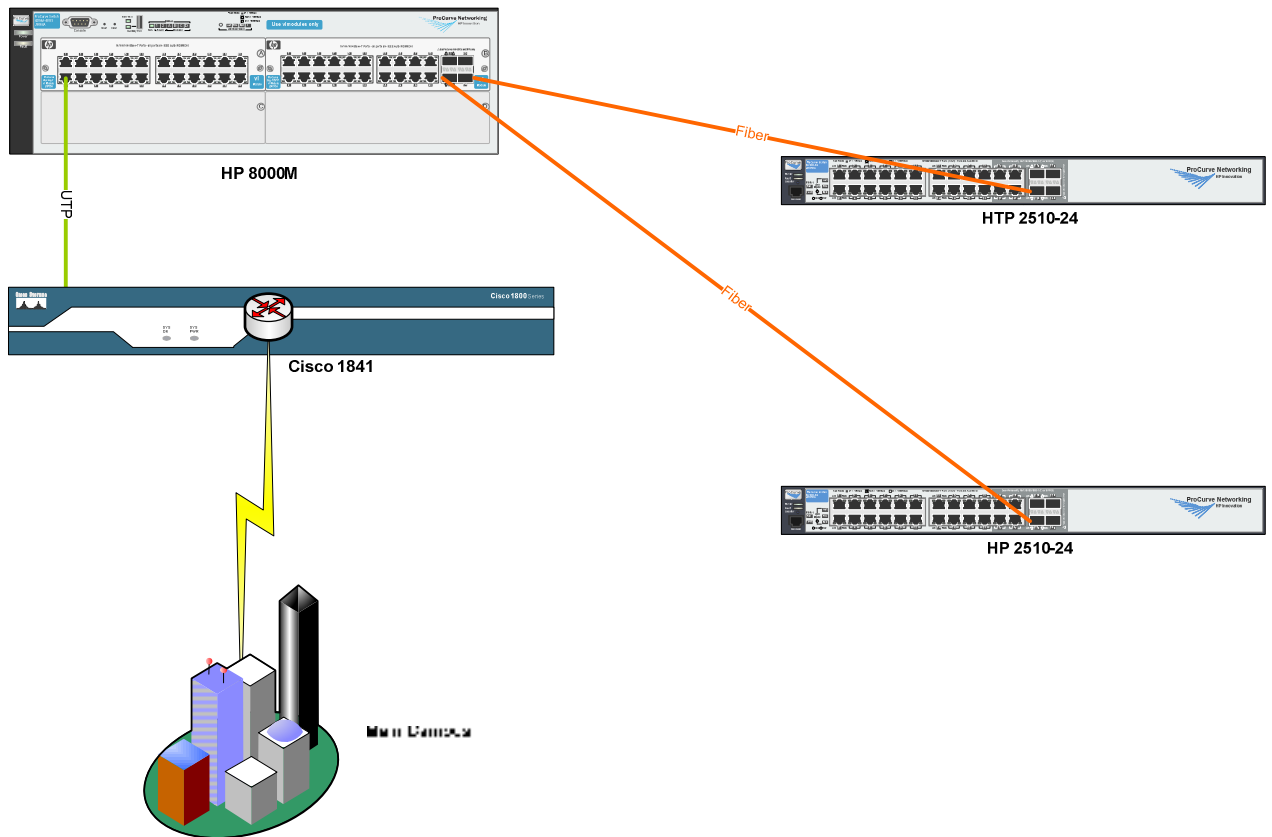


Network Diagram



Switch 1 – 8000M

Have configured VLAN and tagged 2 ports for the fibre connections. Haven't done any configuration on the router and inter vlan routing.

Switch 2 – 2510-24

```
CETC-LAB# show running-config
Running configuration:
; J9019A Configuration Editor; Created on release #Q.11.07
hostname "CETC-LAB"
ip default-gateway 192.168.11.1
snmp-server community "public" Unrestricted
vlan 1
  name "MMGNT"
  untagged 1-24,26
  ip address 192.168.11.5 255.255.255.0
  tagged 25
  exit
vlan 2
  name "PRINT-SERVER"
```

```
    tagged 25
    exit
vlan 3
    name "CLIENT"
    tagged 25
    exit
vlan 4
    name "VoIP"
    tagged 25
    voice
    exit
management-vlan 1
```

Switch 3 - 2510-24

```
CETC-OFFICE# show running-config
Running configuration:
; J9019A Configuration Editor; Created on release #Q.11.07
hostname "CETC-OFFICE"
snmp-server community "public" Unrestricted
vlan 1
    name "MMGNT"
    untagged 1-24,26
    ip address 192.168.11.4 255.255.255.0
    tagged 25
    exit
vlan 2
    name "PRINT-SERVER"
    tagged 25
    exit
vlan 3
    name "CLIENT"
    tagged 25
    exit
vlan 4
    name "VoIP"
    tagged 25
    voice
    exit
management-vlan 1
```