

IMC Configuration Templates

Author	Peter Debruyne (peter.debruyne@belpro.be)
Date	10/04/2013
Document Version	1.0
IMC Version	5.2

Define configuration Templates

Open Configuration Center – Configuration Templates

Optionally, Add a folder for the new Templates

The screenshot shows the HP Intelligent Management Center (IMC) interface. The top navigation bar includes 'My Shortcut', 'Home', 'Resource', 'User', 'Service', 'Alarm', 'Report', and 'System'. The 'Service' menu item is circled in red. The left sidebar contains a 'Configuration Center' section with 'Configuration Templates' circled in red. The main content area is titled 'Service >> Configuration Templates'. It features a 'Query' section with a 'Folder' dropdown set to 'RootFolder', a 'Template Name' input field, and a 'Template Type' dropdown set to 'All'. Below the query section is the 'Configuration Template List' with buttons for 'Add', 'Delete', and 'Refresh'. The 'Add Folder' button is circled in red. The list shows one item: 'Default Folder' (Type: Folder, Create Time: 2013-03-13 10:43:22, Description: Default folder includes all configuratio...). The page indicates '1-1 of 1. Page 1 of 1.' and 'Items per Page: 8 15 [50] 100 200'.

HP Intelligent Management Center

admin Help About Logout

My Shortcut Home Resource User Service Alarm Report System

Configuration Center

- Configuration Templates
- Software Library
- Deployment Guide
- Deployment Task
- Configuration Center
- Auto Deployment Plan
- Auto Backup Plan
- Backup History Report
- Configuration Compare
- Configuration Audit
- Options
- Compliance Center
- VLAN Management
- ACL Management
- User Access Manager
- WLAN Manager

Service >> Configuration Templates

Add to My Favorites Help

Query

Folder: RootFolder

Template Name: [] Template Type: All

Query Reset

Configuration Template List

Add Delete Refresh

1-1 of 1 Page 1 of 1

Items per Page: 8 15 [50] 100 200

Add Folder

Name: Comware-Scripts

Description: []

OK Cancel

Open the folder

HP Intelligent Management Center

admin Help About Logout

My Shortcut Home Resource User Service Alarm Report System

Configuration Center

- Configuration Templates
- Software Library
- Deployment Guide
- Deployment Task
- Configuration Center
- Auto Deployment Plan
- Auto Backup Plan
- Backup History Report
- Configuration Compare
- Configuration Audit
- Options
- Compliance Center
- VLAN Management
- ACL Management
- User Access Manager
- WLAN Manager

Service >> Configuration Templates

Add to My Favorites Help

Query

Folder: RootFolder

Template Name: [] Template Type: All

Query Reset

Configuration Template List

Add Delete Refresh

1-2 of 2. Page 1 of 1

Items per Page: 8 15 [50] 100 200

Template Name	Type	Create Time	Description	Delete	Operation
Default Folder	Folder	2013-03-13 10:43:22	Default folder includes all configuratio...		
Comware-Scripts	Folder	2013-04-10 04:36:04		X	→

Add a new Template (manual)

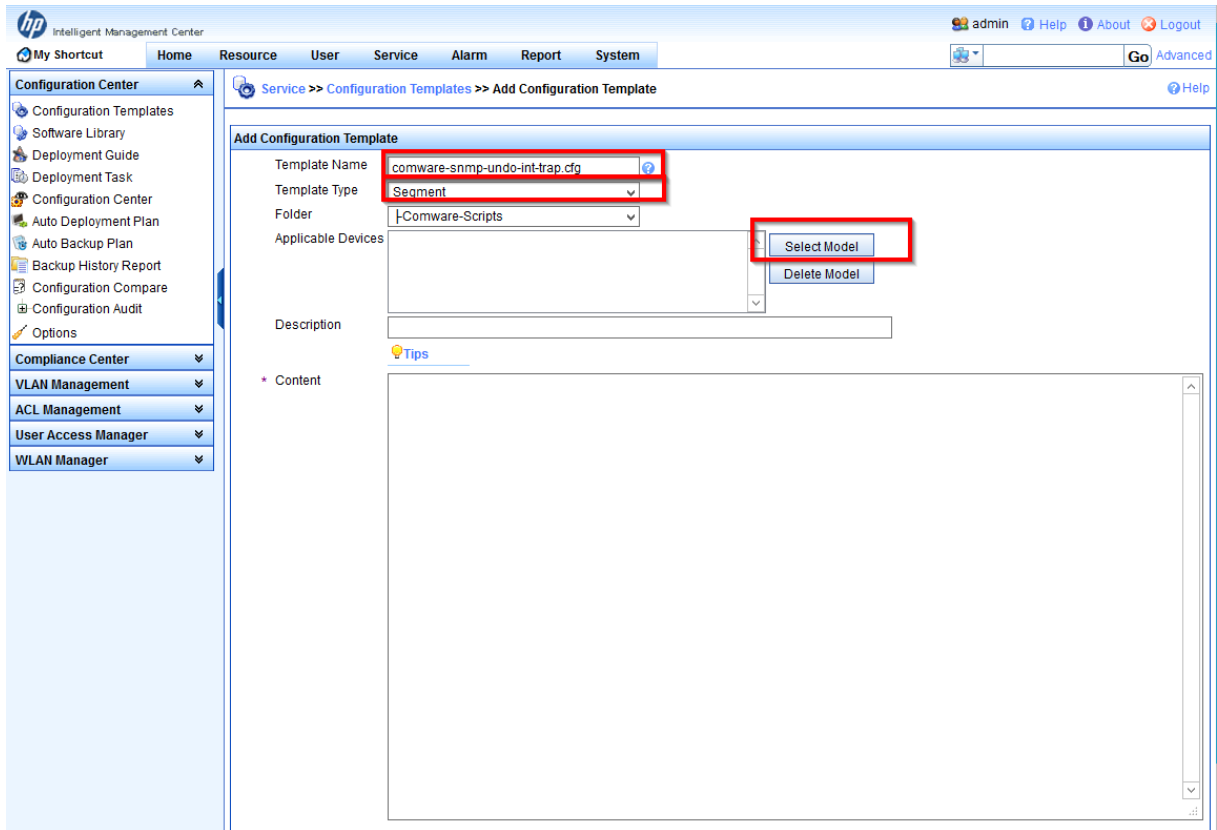
The screenshot shows the HP Intelligent Management Center (IMC) interface. The top navigation bar includes 'Home', 'Resource', 'User', 'Service', 'Alarm', 'Report', and 'System'. The left sidebar contains various management tools like 'Configuration Templates', 'Software Library', and 'Deployment Guide'. The main content area is titled 'Service >> Configuration Templates >> Current Location--Comware-Scripts'. It features a 'Query' section with a 'Folder' dropdown menu set to 'Comware-Scripts' and a 'Template Name' input field. Below this is the 'Configuration Template List' section, which includes an 'Add' dropdown menu with 'Manual Add' selected. The table below has columns for 'Type', 'Create Time', 'Description', 'Delete', and 'Operation'.

Give the template a name

name comware-snmp-undo-int-trap.cfg

Type segment (means only part of config file, not a complete config file)

Select the applicable models (not included in this doc)



Content: (make sure to click on the TIPS link for more information !)

int range \${int-start} to \${int-end}

undo enable snmp trap updown

hp Intelligent Management Center

admin Help About Logout

My Shortcut Home Resource User Service Alarm Report System

Configuration Center

- Configuration Templates
- Software Library
- Deployment Guide
- Deployment Task
- Configuration Center
- Auto Deployment Plan
- Auto Backup Plan
- Backup History Report
- Configuration Compare
- Configuration Audit
- Options

Compliance Center

- VLAN Management
- ACL Management
- User Access Manager
- WLAN Manager

Service >> Configuration Templates >> Add Configuration Template

Add Configuration Template

Template Name: comware-snmp-undo-int-trap.cfg

Template Type: Segment

Folder: Comware-Scripts

Applicable Devices:

Description:

Content: `int range ${int-start} to ${int-end}
undo enable snmp trap updown`

hp Intelligent Management Center

admin Help About Logout

My Shortcut Home Resource User Service Alarm Report System

Configuration Center

- Configuration Templates
- Software Library
- Deployment Guide
- Deployment Task
- Configuration Center
- Auto Deployment Plan
- Auto Backup Plan
- Backup History Report
- Configuration Compare
- Configuration Audit
- Options

Compliance Center

- VLAN Management
- ACL Management
- User Access Manager
- WLAN Manager

Service >> Configuration Templates >> Current Location--Comware-Scripts

Adding Configuration Template "comware-snmp-undo-int-trap.cfg" succeeded.

Query

Folder: Comware-Scripts

Template Name: Template Type: All

Configuration Template List

[Back to Upper List](#)

1-1 of 1. Page 1 of 1. Items per Page: 8 15 [50] 100 200

	Template Name	Type	Create Time	Description	Delete	Operation
<input type="checkbox"/>	comware-snmp-undo-int-trap.cfg	Segment	2013-04-10 04:53:00		<input type="button" value="X"/>	<input type="button" value="↔"/>

Deploy the configuration Templates

Open the IMC configuration Center

HP Intelligent Management Center

admin Help About Logout

My Shortcut Home Resource User **Service** Alarm Report System

Configuration Center

- Configuration Templates**
- Software Library
- Deployment Guide
- Deployment Task
- Configuration Center
- Auto Deployment Plan
- Auto Backup Plan
- Backup History Report
- Configuration Compare
- Configuration Audit
- Options

Compliance Center

VLAN Management

ACL Management

User Access Manager

WLAN Manager

Service >> Configuration Templates

Add to My Favorites Help

Query

Folder: RootFolder

Template Name: [] Template Type: All

Query Reset

Configuration Template List

Add Delete Refresh Add Folder

1-2 of 2. Page 1 of 1. Items per Page: 8 15 [50] 100 200

Template Name	Type	Create Time	Description	Delete	Operation
Default Folder	Folder	2013-03-13 10:43:22	Default folder includes all configuratio...	X	→
Comware-Scripts	Folder	2013-04-10 04:36:04			

hp Intelligent Management Center

admin Help About Logout

My Shortcut Home Resource User Service Alarm Report System

Configuration Center

- Configuration Templates
- Software Library
- Deployment Guide
- Deployment Task
- Configuration Center
- Auto Deployment Plan
- Auto Backup Plan
- Backup History Report
- Configuration Compare
- Configuration Audit
- Options

Compliance Center

- VLAN Management
- ACL Management
- User Access Manager
- WLAN Manager

Service >> Configuration Templates >> Current Location--Comware-Scripts

Query

Folder: Comware-Scripts

Template Name: [] Template Type: All

Query Reset

Configuration Template List

Add Delete Refresh

Back to Upper List Add Folder

1-1 of 1. Page 1 of 1. Items per Page: 8 15 50 100 200

	Template Name	Type	Create Time	Description	Delete	Operation
<input type="checkbox"/>	comware-snmp-undo-int-trap.cfg	Segment	2013-04-10 04:53:00			<ul style="list-style-type: none"> Rename Modify Copy Export Deploy

hp Intelligent Management Center

admin Help About Logout

My Shortcut Home Resource User Service Alarm Report System

Configuration Center

- Configuration Templates
- Software Library
- Deployment Guide
- Deployment Task
- Configuration Center
- Auto Deployment Plan
- Auto Backup Plan
- Backup History Report
- Configuration Compare
- Configuration Audit
- Options

Compliance Center

- VLAN Management
- ACL Management
- User Access Manager
- WLAN Manager

Deploy Configuration 1. Select Device >> 2. Configure Parameters >> 3. Set Task Attributes >> 4. Abstract

Select Device for Update

Tips

Deploying and restoring the runtime configuration of a device depend on the device's support for the configuration commands. After you deploy or restore the startup configuration, you must restart the device to make the configuration take effect.

Select Configuration Template

Folder: Comware-Scripts

Template Name: comware-snmp-undo-int-trap.cfg Merge

Select Device for Update

Select Device Delete All

No match found.

Device Name	IP Address	Device Model	Check Result	Delete
No match found.				

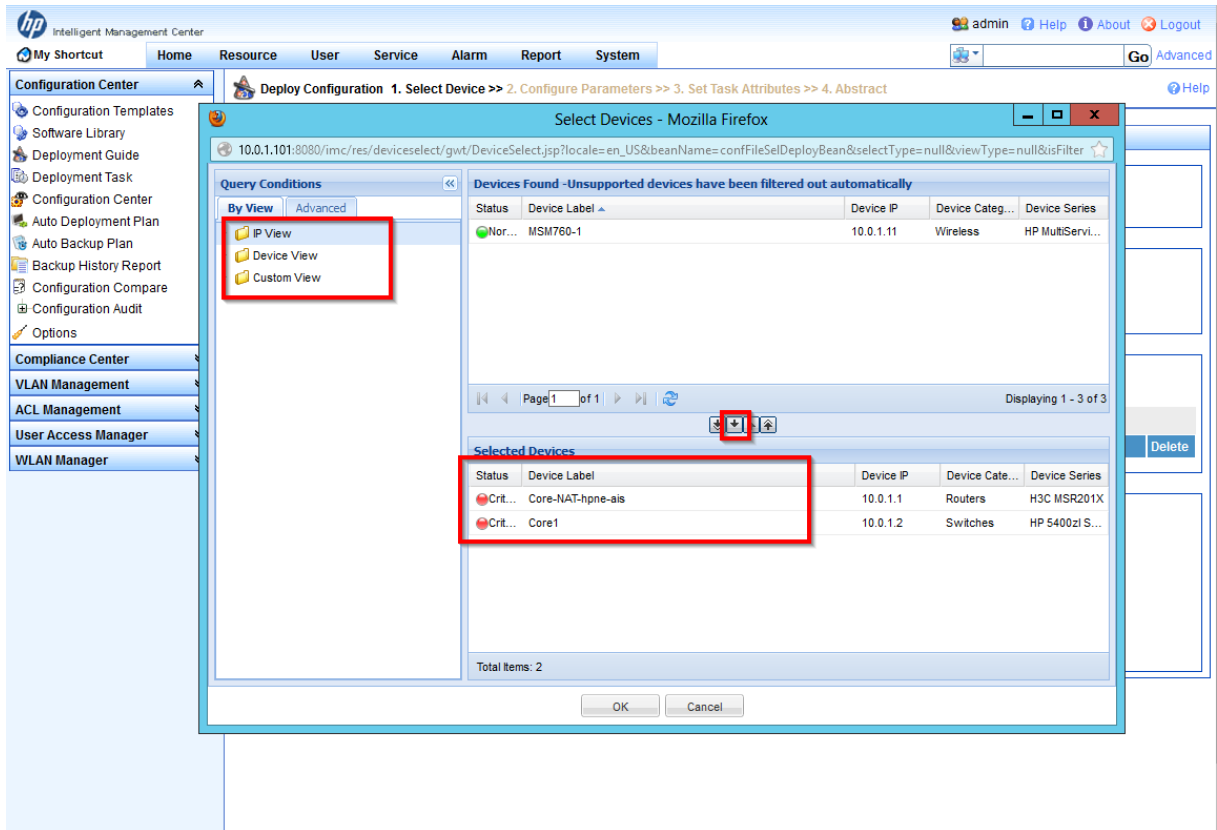
Deploy Strategy

File Type to be Deployed: Running Configuration

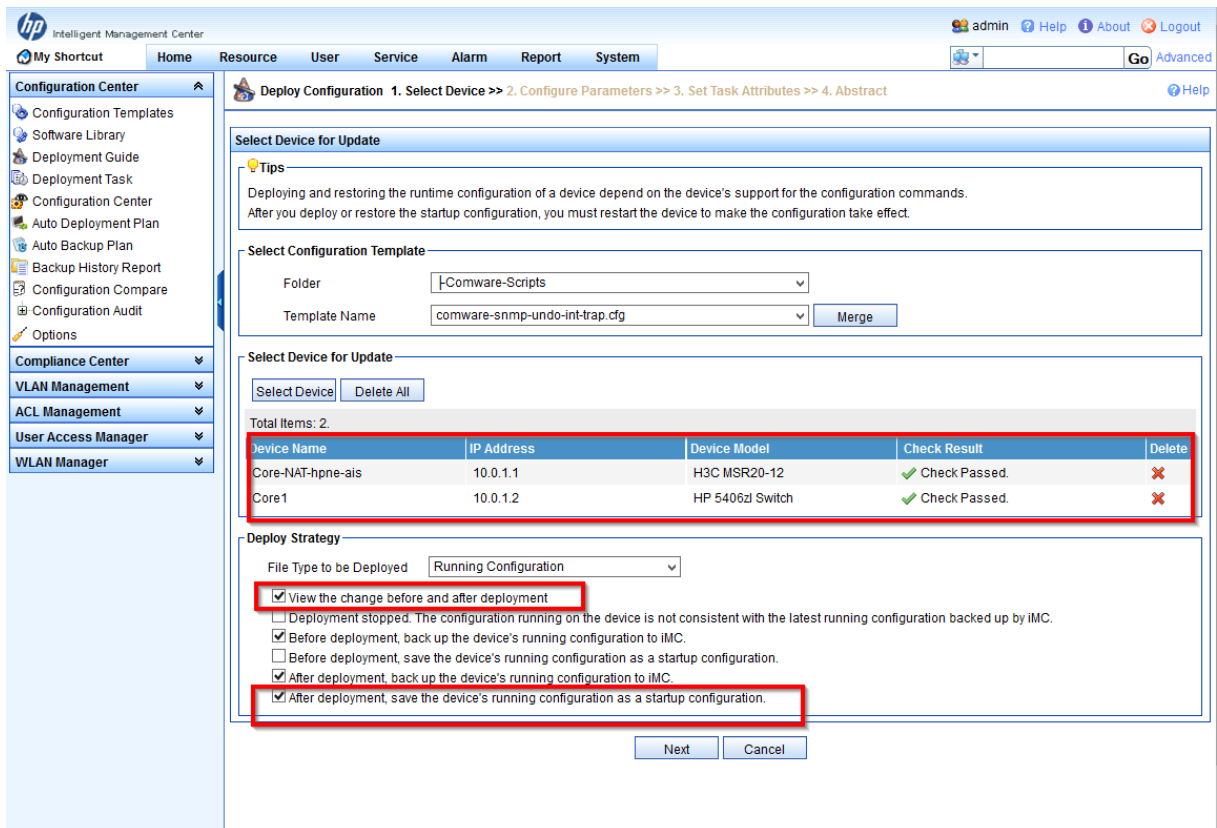
- View the change before and after deployment
- Deployment stopped. The configuration running on the device is not consistent with the latest running configuration backed up by iMC.
- Before deployment, back up the device's running configuration to iMC.
- Before deployment, save the device's running configuration as a startup configuration.
- After deployment, back up the device's running configuration to iMC.
- After deployment, save the device's running configuration as a startup configuration.

Next Cancel

Select the required devices



Make sure to save the config after deployment



The next section will prompt the admin for the input variables.

SCENARIO1

If the interfaces to be configured are the same for all, the basic screen can be used:

HP Intelligent Management Center

admin Help About Logout

My Shortcut Home Resource User Service Alarm Report System

Go Advanced

Deploy Configuration 1. Select Device >> 2. Configure Parameters >> 3. Set Task Attributes >> 4. Abstract Help

Configuration Parameters Core-NAT-hpne-ais(10.0.1.1)

Notice

1. Input value, for example: IP address:10.24.56.78.
2. Input MIB parameter, according with $\$(mibName|mibvariable|index)$.
For example: $\$(H3C-SYS-MAN-MIB|h3cSysImageSize|65537)$ or $\$(H3C-SYS-MAN-MIB|h3cSysImageSize|@(H3C-SYS-MAN-MIB|h3cSysReloadImage|65536))$.
3. Input or select IMC parameter expression, according with $\%<moduleName.paramExpression>$.
For example: $\%<icc.transport.type>$.
4. If input IMC parameter expression, the factual value of expression is related with the material configure equipment.

Please input parameter

int-start	<input type="text" value="g1/0/1"/>	Select IMC Parameter
int-end	<input type="text" value="g1/0/24"/>	Select IMC Parameter

Specify device

Use the Same Parameters for the Following Devices

Previous Next Cancel

SCENARIO2

When the admin knows which switches will have a similar config, the option 'specify device' can be used:

hp Intelligent Management Center

admin Help About Logout

My Shortcut Home Resource User Service Alarm Report System

Configuration Center

- Configuration Templates
- Software Library
- Deployment Guide
- Deployment Task
- Configuration Center
- Auto Deployment Plan
- Auto Backup Plan
- Backup History Report
- Configuration Compare
- Configuration Audit
- Options

Compliance Center

- VLAN Management
- ACL Management
- User Access Manager
- WLAN Manager

Deploy Configuration 1. Select Device >> 2. Configure Parameters >> 3. Set Task Attributes >> 4. Abstract

Configuration Parameters

Notice

- Input value, for example: IP address:10.24.56.78.
- Input MIB parameter, according with $\$(mibName|mibVariable|index)$.
For example: $\$(H3C-SYS-MAN-MIB|h3cSysImageSize|65537)$ or $\$(H3C-SYS-MAN-MIB|h3cSysImageSize|@(H3C-SYS-MAN-MIB|h3cSysReloadImage|65536))$.
- Input or select iMC parameter expression, according with $\%<moduleName.paramExpression>$.
For example: $\%<icc.transport.type>$.
- If input iMC parameter expression, the factual value of expression is related with the material configure equipment.

Select Devices And Configuration Parameters

Device Name

Selected Devices

- Core-NAT-hpne-ais(10.0.1.1)
- Core1(10.0.1.2)

int-start g1/0/1 Select iMC Parameter

int-end g1/0/24 Select iMC Parameter

Specify device

Previous Next Cancel

Schedule the task or run Immediately:

hp Intelligent Management Center

admin Help About Logout

My Shortcut Home Resource User Service Alarm Report System

Configuration Center

- Configuration Templates
- Software Library
- Deployment Guide
- Deployment Task
- Configuration Center
- Auto Deployment Plan
- Auto Backup Plan
- Backup History Report
- Configuration Compare
- Configuration Audit
- Options

Compliance Center

- VLAN Management
- ACL Management
- User Access Manager
- WLAN Manager

Deploy Configuration 1. Select Device >> 2. Configure Parameters >> 3. Set Task Attributes >> 4. Abstract

Set Task Attributes

Task Name Task 2013-04-10 07:04:15

Task Type Deploy Device Configuration

Schedule Type Once

Schedule Time Immediately

Schedule Sequence Concurrent

Error Handling Stop Deployment on the Current Device

Task Description Configuration File: comware-snmp-undo-int-trap.cfg

Previous Next Cancel

Review the settings:

hp Intelligent Management Center

admin Help About Logout

My Shortcut Home Resource User Service Alarm Report System

Go Advanced

Configuration Center

- Configuration Templates
- Software Library
- Deployment Guide
- Deployment Task
- Configuration Center
- Auto Deployment Plan
- Auto Backup Plan
- Backup History Report
- Configuration Compare
- Configuration Audit
- Options

Compliance Center

VLAN Management

ACL Management

User Access Manager

WLAN Manager

Deploy Configuration 1. Select Device >> 2. Configure Parameters >> 3. Set Task Attributes >> 4. Abstract

Abstract

Task Attributes


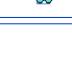
Task Name: Task 2013-04-10 07:04:15
 Task Type: Deploy Device Configuration
 Schedule Time: Immediately
 Schedule Sequence: Concurrent
 Task Description: Configuration File: comware-snmp-undo-int-trap.cfg

Deploy Strategy

Deploy File Type: Running Configuration

- View the change before and after deployment
- Deployment stopped. The configuration running on the device is not consistent with the latest running configuration backed up by iMC.
- Before deployment, back up the device's running configuration to iMC.
- Before deployment, save the device's running configuration as a startup configuration.
- After deployment, back up the device's running configuration to iMC.
- After deployment, save the device's running configuration as a startup configuration.

Deploy Device

Device Name	IP Address	Mask	Device Model	Configuration Content
Core-NAT-hpne-ais	10.0.1.1	255.255.255.0	H3C MSR20-12	
Core1	10.0.1.2	255.255.255.0	HP 5406zl Switch	

Previous Finish Cancel

hp Intelligent Management Center

admin Help About Logout

My Shortcut Home Resource

Go Advanced

Configuration Center

- Configuration Templates
- Software Library
- Deployment Guide
- Deployment Task
- Configuration Center
- Auto Deployment Plan
- Auto Backup Plan
- Backup History Report
- Configuration Compare
- Configuration Audit
- Options

Compliance Center

VLAN Management

ACL Management

User Access Manager

WLAN Manager

Deploy Configuration

Abstract

Task Attributes

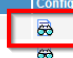
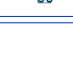
Task Name: Task 2013-04-10 07:04:15
 Task Type: Deploy Device Configuration
 Schedule Time: Immediately
 Schedule Sequence: Concurrent
 Task Description: Configuration File: comware-snmp-undo-int-trap.cfg

Deploy Strategy

Deploy File Type: Running Configuration

- View the change before and after deployment
- Deployment stopped. The configuration running on the device is not consistent with the latest running configuration backed up by iMC.
- Before deployment, back up the device's running configuration to iMC.
- Before deployment, save the device's running configuration as a startup configuration.
- After deployment, back up the device's running configuration to iMC.
- After deployment, save the device's running configuration as a startup configuration.

Deploy Device

Device Name	IP Address	Mask	Device Model	Configuration Content
Core-NAT-hpne-ais	10.0.1.1	255.255.255.0	H3C MSR20-12	
Core1	10.0.1.2	255.255.255.0	HP 5406zl Switch	

View Configuration Content - Mozilla Firefox

10.0.1.101:8080/imc/icc/taskmng/viewConfContent.jsf

Configuration Content

```
int range g1/0/1 to g1/0/24
undo enable snmp trap updown
```

backed up by iMC.

Configuration Content

Close

Finish the task

hp Intelligent Management Center

admin Help About Logout

My Shortcut Home Resource User Service Alarm Report System

Configuration Center

- Configuration Templates
- Software Library
- Deployment Guide
- Deployment Task
- Configuration Center
- Auto Deployment Plan
- Auto Backup Plan
- Backup History Report
- Configuration Compare
- Configuration Audit
- Options

Compliance Center

VLAN Management

ACL Management

User Access Manager

WLAN Manager

Service >> Deployment Task

Adding to My Favorites Help

Creating task "Task 2013-04-10 07:04:15" succeeded.

Query

Task Type: All Task Sub Type: All

Task Status: All Operation Result: All

Query Reset

Deployment Task List

Run Suspend Resume Delete Refresh

1-1 of 1. Page 1 of 1. Items per Page: 8 15 [50] 100 200

	Status--Operation Result	Task Name	Task Sub Type	Schedule Type	Creator	Last Begin Time	Next Begin Time	Modify	Copy
<input type="checkbox"/>	Waiting for Execution-- Unfinished	Task 2013-04-10 07:04:15	Deploy Device Configuration	Once	admin	--	2013-04-10 07:09:33		

Review the results (device is offline in this doc, so deploy fails)

hp Intelligent Management Center

admin Help About Logout

My Shortcut Home Resource User Service Alarm Report System

Configuration Center

- Configuration Templates
- Software Library
- Deployment Guide
- Deployment Task
- Configuration Center
- Auto Deployment Plan
- Auto Backup Plan
- Backup History Report
- Configuration Compare
- Configuration Audit
- Options

Compliance Center

- VLAN Management
- ACL Management
- User Access Manager
- WLAN Manager

Service >> Deployment Task

Add to My Favorites Help

Query

Task Type: All Task Sub Type: All

Task Status: All Operation Result: All

Query Reset

Deployment Task List

Run Suspend Resume Delete Refresh

1-1 of 1. Page 1 of 1. Items per Page: 8 15 [50] 100 200

	Status-Operation Result	Task Name	Task Sub Type	Schedule Type	Creator	Last Begin Time	Next Begin Time	Modify	Copy
<input type="checkbox"/>	Finished-Failed	Task 2013-04-10 07:04:15	Deploy Device Configuration	Once	admin	2013-04-10 07:09:33	--		

hp Intelligent Management Center

admin Help About Logout

My Shortcut Home Resource User Service Alarm Report System

Configuration Center

- Configuration Templates
- Software Library
- Deployment Guide
- Deployment Task
- Configuration Center
- Auto Deployment Plan
- Auto Backup Plan
- Backup History Report
- Configuration Compare
- Configuration Audit
- Options

Compliance Center

- VLAN Management
- ACL Management
- User Access Manager
- WLAN Manager

Service >> Deployment Task >> View Execution Result -- Task 2013-04-10 07:04:15

Help

View Execution Result

Refresh

Total Items: 2.

Device Name	Start Time on Device	End Time on Device	Execution Status	Operation Result	Details
Core-NAT-hpne-ais(10.0.1.1)	2013-04-10 07:09:33	2013-04-10 07:10:11	Task Finished	Communicating with device timed out.	
Core1(10.0.1.2)	2013-04-10 07:09:33	2013-04-10 07:09:59	Task Finished	Communicating with device timed out.	

Back

hp Intelligent Management Center

admin Help About Logout

My Shortcut Home Resource User Service Alarm Report System

Configuration Center

- Configuration Templates
- Software Library
- Deployment Guide
- Deployment Task
- Configuration Center
- Auto Deployment Plan
- Auto Backup Plan
- Backup History Report
- Configuration Compare
- Configuration Audit
- Options
- Compliance Center
- VLAN Management
- ACL Management
- User Access Manager
- WLAN Manager

Service >> Deployment Task >> View Execution Result -- Task 2013-04-10 07:04:15

View Execution Result

Details - Mozilla Firefox

10.0.1.101:8080/rmc/icc/taskmng/viewTaskResultDetailFact.jsf?queryType=1&jobId=null&jobHisId=null&devId=null&beanName=viewTaskResultB

Task Name: Task 2013-04-10 07:04:15 >> Device Name: Core-NAT-hpne-ais

Index	Description	Result	Suggestion	Begin Time	Finish Time
1	Initialize task parameters.	Succeeded.		2013-04-10 07:09:33	2013-04-10 07:09:38
2	Back up device running configuration file to IMC Server before deploying running configuration.	Communicating with device timed out.	Check that communication with the device is normal.	2013-04-10 07:09:39	2013-04-10 07:09:53
3	Initialize redo task parameters.	Succeeded.		2013-04-10 07:09:53	2013-04-10 07:09:54
4	Back up device's running configuration file to IMC Server before deploying running configuration by script.	Communicating with device timed out.	Check that communication with the device is normal.	2013-04-10 07:09:55	2013-04-10 07:10:11

Close

End of document